



ONE ASEAN
ONE RESPONSE

SITUATION UPDATE

TROPICAL CYCLONE MOCHA Myanmar

No. **5**

Saturday, 20 May 2023, 2200 HRS (UTC+7)

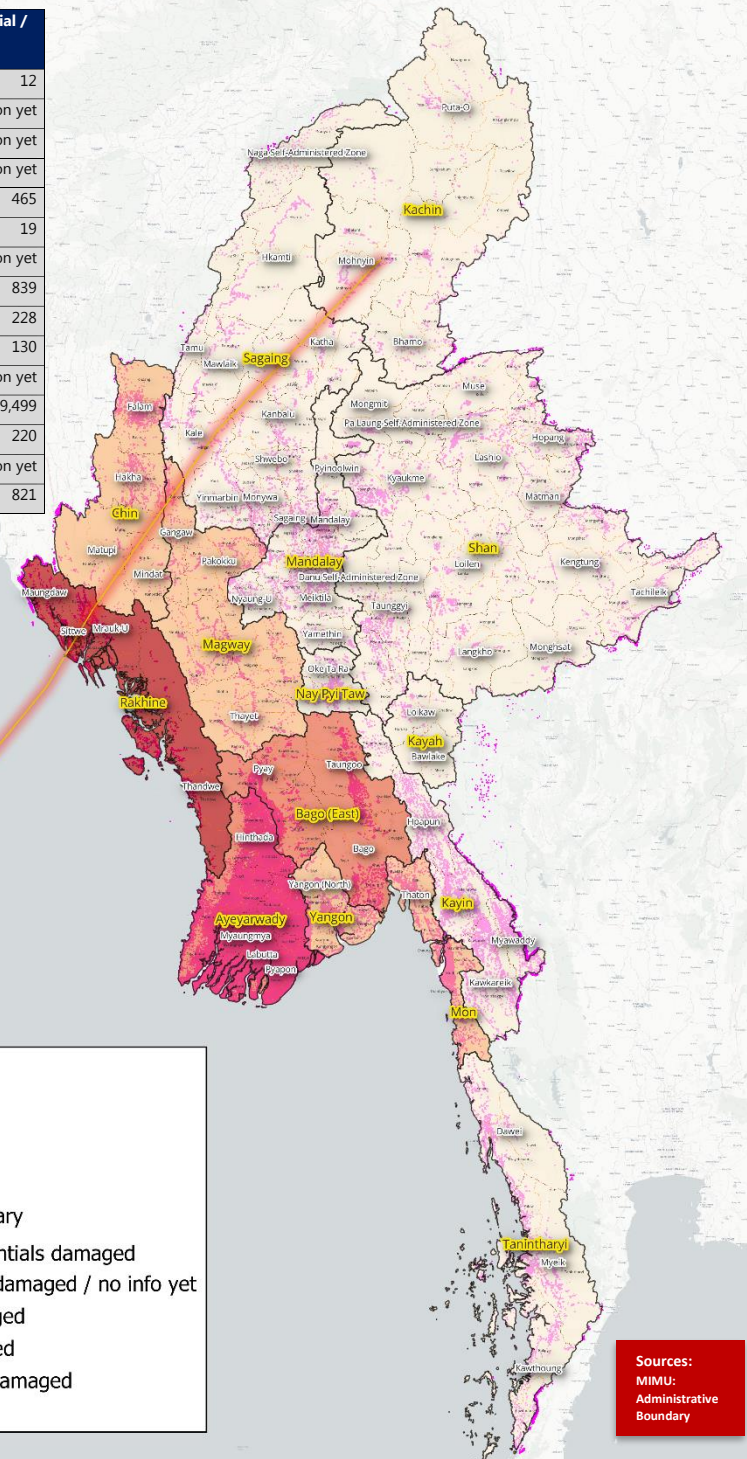
This Situation Update is provided by the AHA Centre for use of the ASEAN Member States and relevant stakeholders. The information presented is collected from various sources, including but not limited to ASEAN Member States' Government Agencies, UN, IFRC, NGOs, Humanitarian and Dialogue Partners, and News Organisations.

Tropical Cyclone MOCHA

Disclaimer: Figures are the latest updates as of 20 May 2023



| State / Region | Number of residential / houses damaged |
|----------------|--|
| Naypyitaw | 12 |
| Kachin | No information yet |
| Kayah | No information yet |
| Kayin | No information yet |
| Chin | 465 |
| Sagaing | 19 |
| Tanintharyi | No information yet |
| Bago | 839 |
| Magway | 228 |
| Mandalay | 130 |
| Mon | No information yet |
| Rakhine | 239,499 |
| Yangon | 220 |
| Shan | No information yet |
| Ayeyarwaddy | 821 |



Legend

- Track of TC MOCHA
- Township Boundary
- District Boundary
- State or Region Boundary

Numbers of houses / residentials damaged

- Less than 100 houses damaged / no info yet
- 100-500 houses damaged
- 500-1K houses damaged
- More than 1K houses damaged
- Buildings / residentials

Sources:
MIMU:
Administrative
Boundary

- 912K**
PERSONS EVACUATED TO SAFER PLACES
- 152**
LIVES LOST
- 70**
INJURED PERSONS
- 30.4K**
LIVESTOCK LOST
- 256.5K**
BUILDINGS DAMAGED
- 4.2K**
SEARCH & RESCUE TEAMS RESPONDING
- 1.3K**
SEARCH & RESCUE VEHICLES (LAND & WATER)
- 30.2K**
HOUSEHOLDS CAN BE CATERED WITH STOCKPILED RELIEF ITEMS
- 283**
TOTAL RAPID RESPONSE AND MEDICAL RESPONSE PERSONNEL DEPLOYED
- 2.7M USD**
ESTIMATED TOTAL COST OF DAMAGE TO BUILDINGS, ROADS, BRIDGES



Note: Information contained in this document are additional information since the AHA Centre Situation Update #4 (18 May 2023) and until today (20 May 2023 at 1800 HRS UTC+7). You may refer to [Situation Update #1](#), [Situation Update #2](#), and [Situation Update #3](#), and [Situation Update 4](#) for the previous information.

1. SUMMARY

UPDATED IMPACTS. Over the course of the aftermath of Tropical Cyclone MOCHA, significant damages have been reported to be mainly sustained by houses and infrastructures. In response to the series of rapid intensifications and predicted severe damages by the cyclone, pre-emptive evacuation was conducted. As a testament to its intensity and nature, cyclone-associated severe winds and rainfall resulted in widespread damages and flooding and internal displacement of a significant number of populations from areas along its path and even in areas hundreds of kilometres away. Latest confirmed casualties have reached more than a hundred and damage and loss data have increased substantially in terms of buildings (reaching multiple hundred thousand), and livestock. Estimated damage and loss costs have reached more than a million US Dollars according to reports from authorities.

PREPAREDNESS AND RESPONSE:

- a. As of the official acceptance by DDM Myanmar of the offer of support by the AHA Centre on 20 May 2023, Disaster Emergency Logistics System for ASEAN (DELSA) relief items and ASEAN-Emergency Response and Assessment Team (ERAT) members are scheduled to be deployed starting 21 May 2023. The AHA Centre is in close coordination with DDM, MOFA, and relevant authorities to ensure that humanitarian needs are addressed in the areas affected by the cyclone.
- b. A total of **17 townships in Rakhine State and 4 townships in Chin State have been declared by the Government of Myanmar as Natural Disaster-affected areas due to Tropical Cyclone MOCHA.**

2. ASSESSMENT OF IMPACTS AND HUMANITARIAN NEEDS

Impacts in Myanmar

- a. According to the information from NDMC, as of 19 May 2023 (numbers are expected to rise as data collection continues and as communication lines are restored):
 - i. 152 lives lost and 70 injured persons (confirmed) (Annex 1.a)
 - ii. 256,514 buildings damaged of which, 242,233 are residential houses, 2,562 are religious buildings, 391 are offices, 2,114 are schools, 318 are hospitals, and 8,896 others (Annex 1.b)
 - iii. 950 vessels, 834 of which are ships/boats and 116 others, cars were reportedly affected (Annex 1.c)
 - iv. 30,424 livestock lost (Annex 1.c)
 - v. 912,277 were evacuated to safe places 233K of which are currently in 396 evacuation centres*
 - vi. 5,598M MMK (2.7M USD) estimated cost of damages to roads, bridges, and buildings
 - vii. 70% of whole Rakhine State sustained damages and 90% of houses have been unroofed.

Note: Data collection are still on-going.



Anticipated Risks. According to the Joint Typhoon Warning Centre (JTWC), Tropical Depression Two, currently located in the Northwest Pacific Ocean, is forecasted (as of reporting) to not directly affect the weather system in Myanmar nor in the ASEAN Region.

Myanmar's Department of Meteorology and Hydrology (DMH) forecasts that rain or thundershowers will be fairly widespread in the next 24 hours in Upper Sagaing Region and Kachin, Chin, and Mon States. Particularly in Sittwe, Rakhine, isolated showers are likely in the next 72 hours which may further worsen the current conditions in the areas.

Urgent Needs. DDM Myanmar reported that the most prioritised humanitarian relief items according to urgency of need on the ground are tarpaulins, family tents, shelter repair kits and toolkits, and jerry cans followed by family kits, kitchen sets, mosquito nets, and personal hygiene kits.

Humanitarian Needs. Following the weather forecast from DMH Myanmar as mentioned in the **Anticipated Risk** section, as well as in consideration of southwest monsoon conditions which usually occurs mid-May until late October, and as validated by DDM Myanmar, emergency relief and shelter are the urgent needs of the affected people by TC MOCHA in Myanmar, especially people who experienced damaged houses. Following these needs, Health, Water, Sanitation, and Hygiene as well as Food assistance and Non-Food Items are also needed by the affected persons.

3. ACTIONS TAKEN AND RESOURCES MOBILISED

Response by Myanmar Authorities

- a. On 18 May, The State Administration Council (SAC) issued Order No 34/2023 indicating senior military officers' assignment of duties for rehabilitation processes in four (4) townships in Chin State (Hakha, Matupi, Paletwa, and Tiddim) and 14 townships in Rakhine State (Kyaukpyu, Buthidaung, Mrauk-U, Thamdwe, Rathedaung, Sittwe, Kyauktaw, Pauktaw, Manaung, Yanbye, Ponaggyun, Minbya, Myebon, and Maungtaw).
- b. On 19 May, the NDMC has announced the welcoming of cash donations and assistance both locally and internationally in the state-owned newspaper, the Ministry's web portal, as well as the department's website.
- c. On 20 May, the Director General of the Department of Disaster Management (DDM), Ministry of Social Welfare, Relief and Resettlement (MSWRR) wrote to the AHA Centre indicating its acceptance of support (deployment of DELSA relief items from the Subang, Malaysia warehouse and Chai Nat, Thailand satellite warehouse and deployment of ASEAN-ERAT). DDM Myanmar emphasizes that it stands ready to support and facilitate, as necessary, the upcoming deployment of the DELSA relief items and ASEAN-ERAT members on the ground.
- d. **Search and Rescue.** Currently, a total of 4,159 Search and Rescue (SAR) teams in Rakhine (3,214) and Chin (945) are deployed according to the NDMC. The NDMC currently has 1,009 land and 242 water SAR vehicles deployed which are being utilised in Rakhine (203 and 139), Chin (84 and 15), Sagaing (395 and 77), and Magway (327 and 11). Stockpiled rescue items can cater to a current total of 28,571 households (HH) in Rakhine (8,974 HH), Chin (2,507 HH), Ayeyarwaddy (5,367 HH), Sagaing (4,519 HH), Magway (3,804 HH), and 6 DMC township offices (3,400 HH).
- e. **Assessment.** According to the NDMC, a total of 19 initial field survey teams have been deployed in Rakhine (17), Ayeyarwaddy (1), and Magway (1).



- f. **Evacuation**.** According to available information from NDMC, 912,277 people have been evacuated to safe places in Rakhine (576,597), Chin (1,509), Ayeyarwady (270,869), IDP camps from Rakhine (63,302). Based on available information from DDM Myanmar, of the 912,277, 237,580 of which are staying in 454 evacuation centres (EC) in Chin (43 EC with 3,455 people), Sagaing (5 EC), Magway (51 EC with 5,117 people), Mandalay (*no data* EC with 6 people), Yangon (6 EC with 475 people), and Ayeyarwady (349 EC with 228,517 people). Additionally, according to the NDMC, 192 shelters are available in Rakhine (54 shelters with 24,800 total capacity), Chin (6 with 3,200 total capacity), Sagaing (11 with 5,600 total capacity), Magway (3 with 1,500 total capacity), and Ayeyarwady (118 with 84,685 total capacity). **These are latest data from the affected areas. The data are still under collection.
- g. **Health.** According to the NDMC, 283 Rapid Response Team personnel have been deployed in Rakhine (113), Chin (7), Sagaing (6), and Ayeyarwaddy (157). A total of 1,320,492 units of healthcare items such as oral rehydration packs (111,000), water purification tablets (1,204,000), emergency lights (542), chlorine powder boxes (780), disaster medical kits (978), interagency emergency health kits (IEHK) (192), and toilet bowls (3,000) have been delivered. NDMC has further deployed 72 Medical Treatment Team personnel in Rakhine (41), Chin (7), Sagaing (3) and Ayeyarwaddy (21).
- h. **Non-Food Items (NFIs).** According to the NDMC, the current NFI distributions of stockpiles are as follows:
- i. 2,745 tarpaulin rolls in Rakhine (2,737), Chin (3), Ayeyarwaddy (1) and Sagaing (4)
 - ii. 1,947 tents in Rakhine (1109), Ayeyarwaddy (209), Sagaing (526), and Magway (103)
 - iii. 185,723 roofing sheets in Rakhine (177, 416), Ayeyarwaddy (7269), Sagaing (48), and Magway (990)
 - iv. 1,244 rain huts in Rakhine (509), Ayeyarwaddy (209), and Sagaing (256)
 - v. 9,911 life jackets in Rakhine (7,250), Chin (42), and Ayeyarwaddy (2,619)
 - vi. Iron nails in Rakhine (22 visses / 37 kg)
 - vii. Nails in Rakhine (6424.2 visses / 10,793 kg)
 - viii. Timber logs in Rakhine (413.6 tonnes)
- i. **Transportation.** According to NDMC, 1,492 units for transportation support are deployed. 173 of which, are passenger vehicles deployed in Rakhine (89), Chin (42), and Sagaing (42); 655 of which, are cargo vehicles deployed in Rakhine (141), Chin (257), and Sagaing (257); 481 of which, are watercrafts deployed in Rakhine (477), Chin (2), and Sagaing (2); and 183 others, are ambulances deployed in Rakhine (128), Chin (10), and Sagaing (45).
- j. **Stockpile of Relief Items.** According to the NDMC, current stockpile of relief items is enough for 30,173 households, with details as follows: Rakhine (9,946), Chin (1,308), Ayeyarwaddy (5,578), Sagaing (5,776), Magway (4,165) and minor affected areas (3,400).
- k. Data collection on the impacts and damages is ongoing by relevant authorities.



Response by the AHA Centre

- a. As of 20 May, the AHA Centre is also in the process on mobilising DELSA relief items from Subang Malaysia to Yangon Myanmar, to be handed over to DDM Myanmar as well as to be further distributed to the areas affected by the tropical cyclone.
- b. The AHA Centre ICLT in Yangon are on standby to facilitate the reception of incoming DELSA relief items which shall then be handed over to DDM Myanmar for distribution.
- c. ASEAN-ERAT also plans to be deployed and to start the assessments in the affected areas by Tropical Cyclone MOCHA in Myanmar on Sunday, 21 May 2023.
- d. The AHA Centre EOC remains on **Alert Level RED (Active Response)**.
- e. The AHA Centre ICLT continue to provide support to DDM Myanmar in the development of situation updates/reports, logistics, communications, coordination, and other matters as necessary.
- f. The AHA Centre has activated the Web-Emergency Operations Centre (WebEOC) as an information-sharing platform between the AHA Centre Emergency Operations Centre in Jakarta and ICLT in Myanmar for TC MOCHA response.

Response by Humanitarian Partners and Other Country

Disclaimer: To identify potential gaps and needs and to avoid duplication of humanitarian efforts, below are some of the actions taken by other humanitarian actors in response to the impacts of TC MOCHA in Myanmar.

- a. According to the NDMC on 19 May, the Yunnan International Friendship Association donated 41.3 million Myanmar Kyats worth of aid and food items to the Cyclone MOCHA affected people in Myanmar.
- b. According to [UK's Foreign, Commonwealth & Development Office](#) on 19 May 2023, UK announces humanitarian support for 175,000 affected by Cyclone Mocha in Myanmar.
- c. Health Cluster Myanmar has released [Health Cluster Situation Report](#) on 19 May 2023. Some updates include: (1) Most health facilities are affected, resulting in a shortage of medicines, medical supplies and health staff. Many laboratories and operating theatres in Sittwe township are non-functional; (2) Medical clinics are totally destroyed in 3 IDP camps in Sittwe township which were observed; (3) Sittwe General Hospital, four hospitals in Kyauktaw, Minbya, Pauktaw and Rathedaung townships, Stations hospitals in Mrauk-U townships & Ku Taung villages are totally damaged by the cyclone. (4) Thet Kel Pyin station hospital in Sittwe is partially destroyed with eight in-patients still being managed and functional delivery rooms; (5) Until now, four mobile clinics under emergency approval and eleven mobile clinics under routine approval are providing essential medical services to the cyclone affected people in Sittwe, Ponnagyun, Buthidaung, Maungdaw, Mrauk-U and Minbya.
- d. According to the information from China Embassy in Myanmar through the China Embassy Social Media, China is willing to provide emergency disaster relief assistance to the affected community by TC MOCHA in Myanmar ([CNA](#)).
- e. The United States is providing an initial USD 200,000 through USAID to supplement ongoing relief activities (shelter, water, hygiene) in Rakhine and Chin States ([US Embassy Statement 18 May](#)).



- f. A few United Nations agencies are still awaiting approval from authorities to assess and distribute supplies in affected areas, some inaccessible due to extensive damage. ([Channel News Asia 17 May](#))
- g. WFP has released [Situation Report](#) on 19 May 2023. Some updates include: (1) WFP has started distributing food, cash, and nutrition supplies to 190,000 cyclone-affected people in central Rakhine State; (2) High Energy Biscuits and rice will be provided to 6,000 affected individuals in the worst-hit villages in northern Rakhine State; (3) WFP estimates that at least 800,000 people are in urgent need of food assistance in Rakhine State, of whom 360,000 are existing beneficiaries and 440,000 are new beneficiaries affected by the cyclone.
- h. WFP has released [Situation Report](#) on 19 May 2023. Some updates include: (1) WFP has started distributing food, cash, and nutrition supplies to 190,000 cyclone-affected people in central Rakhine State; (2) High Energy Biscuits and rice will be provided to 6,000 affected individuals in the worst-hit villages in northern Rakhine State; (3) WFP estimates that at least 800,000 people are in urgent need of food assistance in Rakhine State, of whom 360,000 are existing beneficiaries and 440,000 are new beneficiaries affected by the cyclone.

4. PLAN OF ACTIONS

The AHA Centre's Plan

- a. The AHA Centre deployed ASEAN-Emergency Response and Assessment Team (ASEAN-ERAT) members coming from Brunei Darussalam, Indonesia, Myanmar, the Philippines, Singapore, Thailand, ASEAN Secretariat, and the AHA Centre. The Team is currently in Yangon to conduct preparation meeting and discuss the Plan of Action (PoA) of the deployment. ASEAN-ERAT also stands ready to facilitate the reception of DELSA relief items.
- b. DELSA relief items from the DELSA regional stockpile in Subang, Malaysia and the satellite warehouse in Chainat, Thailand are in preparation for mobilisation to Yangon. The first batch of the relief items from Subang, Malaysia is expected to arrive in Yangon on Sunday, 21 May 2023, with more expected to arrive within the coming days.
- c. The AHA Centre team, including the ICLT in Nay Pyi Taw and Yangon, will continue to support Myanmar's response effort under close coordination with DDM Myanmar.
- d. AHA Centre, in coordination with DDM Myanmar, has also been exploring and preparing local procurement for several items that the affected population might need and available within the country.
- e. The AHA Centre will continuously update the impact information in the ASEAN Disaster Information Network (ADINet) on the impacts of TC MOCHA with the following identification numbers AHADID: [AHA-TC-2023-000504-MMR](#) | GLIDE Number: TC-2023-000069-MMR
- f. The AHA Centre will release Situation Update #6 of Tropical Cyclone MOCHA tentatively on Monday, 22 May 2023.



Prepared by:

The AHA Centre - Emergency Operations Centre (EOC)

ABOUT THE AHA CENTRE

The AHA Centre - ASEAN Coordinating Centre for Humanitarian Assistance on disaster management - is an inter-governmental organisation established by 10 ASEAN Member States – Brunei Darussalam, Cambodia, Indonesia, Lao PDR, Malaysia, Myanmar, Philippines, Singapore, Thailand and Viet Nam - to facilitate the cooperation and coordination among ASEAN Member States and with the United Nations and international organisations for disaster management and emergency response in the region.

The ASEAN Coordinating Centre for Humanitarian Assistance on disaster management (AHA Centre), Graha BNPB 13th Floor, JL Raya Pramuka Kav 38, East Jakarta, 13210, Indonesia
Phone: +62-21-210-12278 | www.ahacentre.org | email: info@ahacentre.org

Contact:

- 1) Dir Thiri Maung, Director of Emergency Operations Center of Myanmar, thirimaung.rrd@gmail.com
- 2) Lawrence Anthony Dimailig, Assistant Director for Disaster Monitoring and Analysis, lawrence.dimailig@ahacentre.org
- 3) Keith Paolo Landicho, Disaster Monitoring & Analysis Officer, keith.landicho@ahacentre.org
- 4) Sadhu Zukhruf Janottama, Disaster Monitoring & Analysis Officer, sadhu.janottama@ahacentre.org
- 5) Mohammad Fadli, AHA Centre Liaison – Pacific Disaster Center (PDC), mfadli@pdc.org



ANNEXES

Annex 1.a Table of Cyclone MOCHA casualties (source: NDMC)

| State/Region | Lives Lost | Injured | Missing |
|--------------|------------|-----------|----------|
| Naypyitaw | | | |
| Kachin | | | |
| Kayah | | | |
| Kayin | | 2 | |
| Chin | | | |
| Sagaing | | | |
| Tanintharyi | | | |
| Bago | | 9 | |
| Magway | 3 | 1 | |
| Mandalay | 1 | | |
| Mon | | | |
| Rakhine | 145 | | |
| Yangon | | 1 | |
| Shan | 2 | | |
| Ayeyarwady | 1 | | |
| Total | 152 | 13 | 0 |

Annex 1.b Table of Cyclone MOCHA associated Impacts (source: NDMC)

| State/Region | Damages | | | | | | Total |
|--------------|---------------|-------------|------------|-------------|------------|-------------|---------------|
| | Residential | Religious | Office | School | Hospital | others | |
| Naypyitaw | 12 | 5 | | 5 | | 16 | 38 |
| Kachin | | 1 | 1 | | | | 2 |
| Kayah | | | | | | | |
| Kayin | | | | | | | |
| Chin | 465 | 4 | 3 | 8 | 2 | 4 | 486 |
| Sagaing | 19 | | | | | 42 | 61 |
| Tanintharyi | | | | | | | |
| Bago | 839 | 14 | 6 | 10 | 2 | 15 | 886 |
| Magway | 228 | 13 | 8 | 24 | 5 | 491 | 769 |
| Mandalay | 130 | 18 | 10 | 9 | 3 | 71 | 241 |
| Mon | | | | | | | |
| Rakhine | 239499 | 2462 | 346 | 1932 | 296 | 8160 | 252695 |
| Yangon | 220 | 7 | 1 | 13 | 1 | 73 | 315 |
| Shan | | | | | | | |
| Ayeyarwady | 821 | 38 | 16 | 113 | 9 | 24 | 1021 |
| Total | 242233 | 2562 | 391 | 2114 | 318 | 8896 | 256514 |

Annex 1.c Table of Cyclone MOCHA losses in assets(source: NDMC)

| State/Region | Vehicle Assets | | | Livestock Assets | | | | Total |
|--------------|----------------|------------|------------|------------------|-------------|-------------|--------------|--------------|
| | Ships/Boats | Cars | Total | Buffalos | Cows | Pig | Others | |
| Naypyitaw | | | | | | | | |
| Kachin | | | | | | | | |
| Kayah | | | | | | | | |
| Kayin | | | | | | | | |
| Chin | | | | | | | | |
| Sagaing | | | | | | | | |
| Tanintharyi | | | | | | | | |
| Bago | | | | | | | 500 | 500 |
| Magway | | | | | 18 | 5 | 1 | 24 |
| Mandalay | | 1 | 1 | | | | | |
| Mon | | | | | | | | |
| Rakhine | 834 | 111 | 945 | 4176 | 6582 | 2262 | 16880 | 29900 |
| Yangon | | 4 | 4 | | | | | |
| Shan | | | | | | | | |
| Ayeyarwady | | | | | | | | |
| Total | 834 | 116 | 950 | 4176 | 6600 | 2267 | 17381 | 30424 |

