



ONE ASEAN
ONE RESPONSE

SITUATION UPDATE

TROPICAL CYCLONE ONE (MOCHA) Myanmar

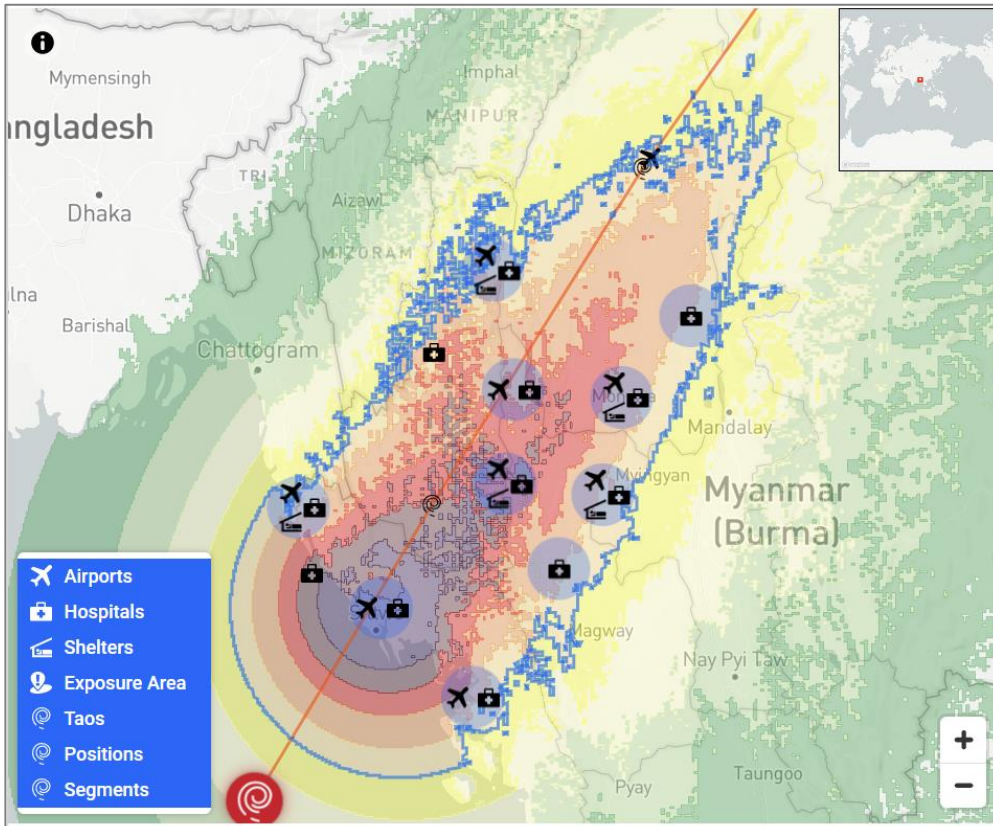
No. **2**

Sunday, 14 May 2023, 2200HRS (UTC+7)

This Situation Update is provided by the AHA Centre for use of the ASEAN Member States and relevant stakeholders. The information presented is collected from various sources, including but not limited to ASEAN Member States' Government Agencies, UN, IFRC, NGOs, Humanitarian and Dialogue Partners, and News Organisations.

Tropical Cyclone MOCHA

Disclosure(s): Figures are the latest updates as of 14 May 2023



COORDINATES: LAT: 18.7 | LNG: 91.8

REPORTED: SUN MAY 14 2023 13:44:56 GMT+0700 (INDOCHINA TIME)
CURRENT SUSTAINED WIND SPEED: 161 MPH / 259 KPH
GUSTS: 196 MPH / 315 KPH

- CATASTROPHIC DAMAGE
- SEVERE DAMAGE
- WIDESPREAD DAMAGE
- MODERATE DAMAGE 5% OF VALUE
- MINOR DAMAGE; POWER OUT
- TREES DOWN; SOME POWER LOSS
- BRANCHES BREAKING
- LARGE TREES SWAY
- SMALL TREES SWAY

POPULATION EXPOSED

ESTIMATED POPULATION EXPOSED

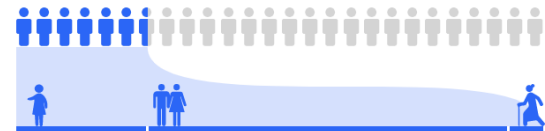
8.7 MILLION

ESTIMATED HOUSEHOLDS EXPOSED

1.97 MILLION

ESTIMATED VULNERABLE POPULATION EXPOSED

2.17 MILLION



25%

539,631
CHILDREN
AGE 0-14

69%

1.49 MILLION
ADULTS
AGE 15-64

7%

141,436
ELDERLY
AGE 65+

ESTIMATED HOSPITALS EXPOSED

51

ESTIMATED SCHOOLS EXPOSED

110

CAPITAL EXPOSED

USD

35.3 BILLION

EXPOSURE DETAIL BY SEVERITY

SEVERITY LEVEL	EXPOSURE AREA	AFFECTED POPULATION			TOTAL	CAPITAL EXPOSED	SCHOOLS	HOSPITALS
		AGE 0-14	AGE 15-64	AGE 65+				
	Widespread Damage and Above	618,505	1.71 Million	160,724	2.49 Million	10.03 Billion	36	8
	Moderate Damage; 5% of value	779,391	2.15 Million	202,695	3.13 Million	13.1 Billion	39	23
	Minor Damage; power out	904,691	2.49 Million	234,243	3.63 Million	12.72 Billion	64	38
	TOTAL	2.3 Million	6.35 Million	597,680	9.25 Million	35.84 Billion	138	69



Note: Information contained in this document are additional information since the AHA Centre Situation Update #1 (12 May 2023) and until today (14 May 2023 at 1700 HRS UTC+7). You may refer to [Situation Update #1 \(12 May 2023\)](#) for the previous information.

1. SUMMARY

- a. **METEOROLOGICAL CONDITION.** Tropical Cyclone MOCHA, equivalent to a Category 4 hurricane (on the Saffir-Simpson scale), has made its landfall today, 14 May afternoon, in Myanmar landmass, with maximum sustained winds of 250 km/h, and wind gusts up to 305 km/h. According to the latest available forecast, TC MOCHA is headed Northeast at about 26 km/h, and is expected to weaken over the next 24 hours.
- b. **LANDFALL:** According to Department of Meteorology and Hydrology at 1430 HRS UTC+7, TC MOCHA has crossed Rakhine Coast, near Sittwe (Myanmar). The present stage of the Extremely Severe Cyclonic Storm is coded **brown stage**. **Brown Color Emergency Stage means the storm is crossing Myanmar Coasts currently.** After made its landfall in the coast between Cox's Bazar (Bangladesh) and Kyaukphyu (Myanmar) near Sittwe (Myanmar) around afternoon of 14 May as an Extremely Severe Cyclonic Storm, MOCHA is likely to continue to move North-Northeastwards towards Chin State and Magway Region as a Very Severe Cyclonic Storm; then towards Sagaing Region as a Cyclonic Storm; and towards Kachin State as a deep land depression.

2. ASSESSMENT OF POTENTIAL HAZARDS, IMPACTS, AND HUMANITARIAN NEEDS

Potential Hazards

- a. At most, Catastrophic Damage-causing winds is possible especially in the areas of Rakhine State and Chin State, and Severe Damage-causing winds is possible in the areas of Rakhine, Chin, Magway, and Sagaing (source: TAOS Model, DisasterAWARE). Maximum wind speed may reach 177-193 km/h in Rakhine State, 113-145 km/h in Sagaing, Mandalay, Magway, Ayeyarwady Regions and Chin State and 64-97 km/h in Naypyitaw, Bago, Yangon Regions and Kachin, Shan, Kayah States (DMH).
- b. At most, 152-229 mm of tropical cyclone-associated rainfall is possible in areas of Rakhine and Chin States (source: TAOS Model, DisasterAWARE); and rain or thundershowers will be fairly widespread to widespread in Naypyitaw, Sagaing, Mandalay, Magway, Bago, Yangon, Ayeyarwady, Taninthayi Regions and Kachin, Shan, Chin, Rakhine, Kayah, Kayin, Mon States (DMH).

Potential Impacts in Myanmar – POTENTIAL OF A CATASTROPHIC DISASTER. An estimated **8.7 Million people, 1.9M households, and \$35.3 Billion (USD)** of infrastructure (total replacement value) are potentially exposed to moderate to severe damaging winds.

Humanitarian Needs (as jointly analysed by PDC-Global, WFP, and UN OCHA). 4.56B calories per day, 6.52M litres of water per day, and 7.5M sqm of shelter.

Humanitarian Needs (Situational Analysis Early Need Assessment by IFRC and MRCS). There are a need of Emergency Relief and Shelter; Health, Water, Sanitation,



and Hygiene; and Food Security and Livelihood in the Area of Rakhine State, Chin State, Magway, and Sagaing (potentially affected by TC MOCHA).

Humanitarian Needs (as indicated by the Government of Myanmar) is mainly related to Shelters.

3. ACTIONS TAKEN AND RESOURCES MOBILISED

Response by Myanmar Government

- a. Disaster Management Centre (DMC) has been activated and operationalised since 8 May 2023.
- b. A total of 107 personnel of Rapid Response Team in Rakhine and 7 personnel of Rapid Response Team in Chin are standby.
- c. 39 personnel of medical treatment team in Rakhine and 7 personnel medical treatment team are standby.
- d. A total of 3.2K personnel of Search and Rescue Team in Rakhine, and 7 personnel of Search and Rescue Team in Chin are standby.
- e. A total of 203 land and 139 water SAR vehicle in Rakhine; 395 land and 77 water SAR vehicle in Sagaing; 84 land and 15 water SAR vehicle in Chin; and 327 land and 11 water SAR vehicle in Magway are standby.
- f. A total of 55.6K persons in Rakhine, 1.05K persons in Chin, 2.8K persons in Ayeyarwady, and 18.8K persons from IDP camps from Rakhine has been evacuated to safe places. According to the coordination meeting between the AHA Centre and DDM Myanmar on 14 May 2023 at 1830 HRS UTC+7, Myanmar Government has already prepositioned relevant stockpiles and conducted pre-emptive evacuations in Rakhine State for about 100,000 people.
- g. Stockpiles for Non-food items for 7.99K families in Rakhine, 1K families in Chin, 4.51K families in Sagaing, and 3.8K families in Magway are available.
- h. 7 Emergency ICT equipment in Rakhine and 2 in Chin are available.
- i. A total of 54 shelters (can accommodate 24.8K persons) in Rakhine, 5 shelters (can accommodate 3.2K persons) in Chin, 11 shelters (can accommodate 5.6K persons) in Sagaing, and 3 shelters (can accommodate 1.5K persons) in Magway are available.
- j. Tarpaulins and water purification tablets are ready to be transported to the affected areas by Myanmar Government.
- k. The government already took good preparedness action based on the experience from Cyclone Nargis (2008) and is expected to have low casualties. The needs mainly point to recovery.

Response by the AHA Centre

- a. The AHA Centre already upgraded the EOC Alert Level to **RED (Active Response)**
- b. The AHA Centre has been monitoring the development of the tropical disturbance in the Indian Ocean, currently referred to as "Tropical Cyclone MOCHA". The AHA



Centre continuously coordinates and exchanges information on the developments of TC MOCHA with DDM.

- c. On 12 May 2023, the AHA Centre had a meeting with DDM. The meeting aimed to clarify and confirm the situation on the ground. AHA Centre presented the summary of their monitoring to DDM as well as the status of the stockpiles in the warehouses (in Chai Nat, Thailand; in Subang, Malaysia; and in WFP, DDM, MRCS warehouses in Myanmar).
- d. The AHA Centre has coordinated with the Department of Disaster Prevention and Mitigation of Thailand and *Agensi Pengurusan Bencana Negara* (NADMA) of Malaysia for the option of using Myanmar's military aircraft to pick up stockpiles in the warehouses in Chai Nat, Thailand and in UNHRD in Subang, Malaysia.
- e. The AHA Centre has sent out an ASEAN-ERAT deployment alert on 12 May.
- f. The AHA Centre has initialised emergency satellite observation request through Sentinel Asia for Myanmar (2 areas in Rakhine State, 1 area in Chin State)
- g. The AHA Centre has held a meeting with AMRG Representative to the AHA Centre (Indonesia) and The Defense Attaché from Malaysia, Thailand, and Myanmar on 13 May 2023 for the support to facilitate mobilisation of the Disaster Emergency Logistics System of ASEAN (DELSA) relief items in Chai Nat, Thailand, and Subang, Malaysia Warehouse to Myanmar.
- h. Following the coordination with DDM of Myanmar, the AHA Centre has deployed an advanced team as In-Country Liaison Team (ICLT) to work closely and support DDM Myanmar. The team comprise of 4 members of the expertise of Information Management, Communications, and Coordination (overall coordination and civil-military coordination). The ICLT arrived at DDM Office in Naypyitaw on 14 May 2023 at 1830 HRS UTC+7 to receive briefing from DDG Dr. Mien Thein.
- i. The AHA Centre has held an EOC briefing meeting with all AHA Centre staff, ASEAN Secretariat, and AMRG Representative to the AHA Centre (Indonesia) on 14 May 2023 to update about the situation and support that can be provided by ASEAN to the community affected by Tropical Cyclone MOCHA. The meeting was attended by H.E. Ekkaphab Phanthavong, Deputy Secretary-General of ASEAN for ASAN Socio-Cultural Community, Lee Yam Ming, Executive Director of the AHA Centre, and Col. Imam Cahyo, AMRG representative to the AHA Centre.

4. PLAN OF ACTIONS

The AHA Centre's Plan

- a. The AHA Centre is also in the process of deployment for the ASEAN-Emergency Response and Assessment Team (ASEAN-ERAT) members to conduct the Rapid Needs Assessment in the affected areas after Tropical Cyclone MOCHA make its landfall. The ASEAN-ERAT team will be on standby and once approved by the DDM, will deploy to the field immediately, likely on Tuesday, 16 May.
- b. The stand-by ASEAN-ERAT members consist of 10 persons which are coming from the AHA Centre, ASEAN Secretariat, Philippines, Indonesia, Singapore, Cambodia, and Brunei Darussalam with the expertise of coordination, assessment, information management, and logistics.



- c. Disaster Emergency Logistics System for ASEAN (DELSA) relief items from Malaysia Subang warehouse and Thailand Chainat satellite warehouse are ready to deploy, pending approval from DDM and clearance on the utilisation of the military aircraft.
- d. The AHA Centre will continue to closely coordinate with DDM Myanmar. The AHA Centre ICLT will provide support starting by tomorrow, 15 May 2023 to support on the development of situation update/report and other matters as necessary.
- e. The AHA Centre will continuously update the impact information in the ASEAN Disaster Information Network (ADINet) on the impacts of TC MOCHA.

Prepared by:

The AHA Centre - Emergency Operations Centre (EOC)

ABOUT THE AHA CENTRE

The AHA Centre - ASEAN Coordinating Centre for Humanitarian Assistance on disaster management - is an inter-governmental organisation established by 10 ASEAN Member States – Brunei Darussalam, Cambodia, Indonesia, Lao PDR, Malaysia, Myanmar, Philippines, Singapore, Thailand and Viet Nam - to facilitate the cooperation and coordination among ASEAN Member States and with the United Nations and international organisations for disaster management and emergency response in the region.

The ASEAN Coordinating Centre for Humanitarian Assistance on disaster management (AHA Centre), Graha BNPB 13th Floor, JL Raya Pramuka Kav 38, East Jakarta, 13210, Indonesia
Phone: +62-21-210-12278 | www.ahacentre.org | email: info@ahacentre.org

Contact:

- 1) Andrew Mardanugraha, Project Coordinator,
andrew.mardanugraha@ahacentre.org
- 2) Sadhu Zukhruf Janottama, Disaster Monitoring & Analysis Officer,
sadhu.janottama@ahacentre.org

