



ONE ASEAN
ONE RESPONSE

SITUATION UPDATE

TROPICAL CYCLONE ONE (MOCHA) Myanmar

No. **3**

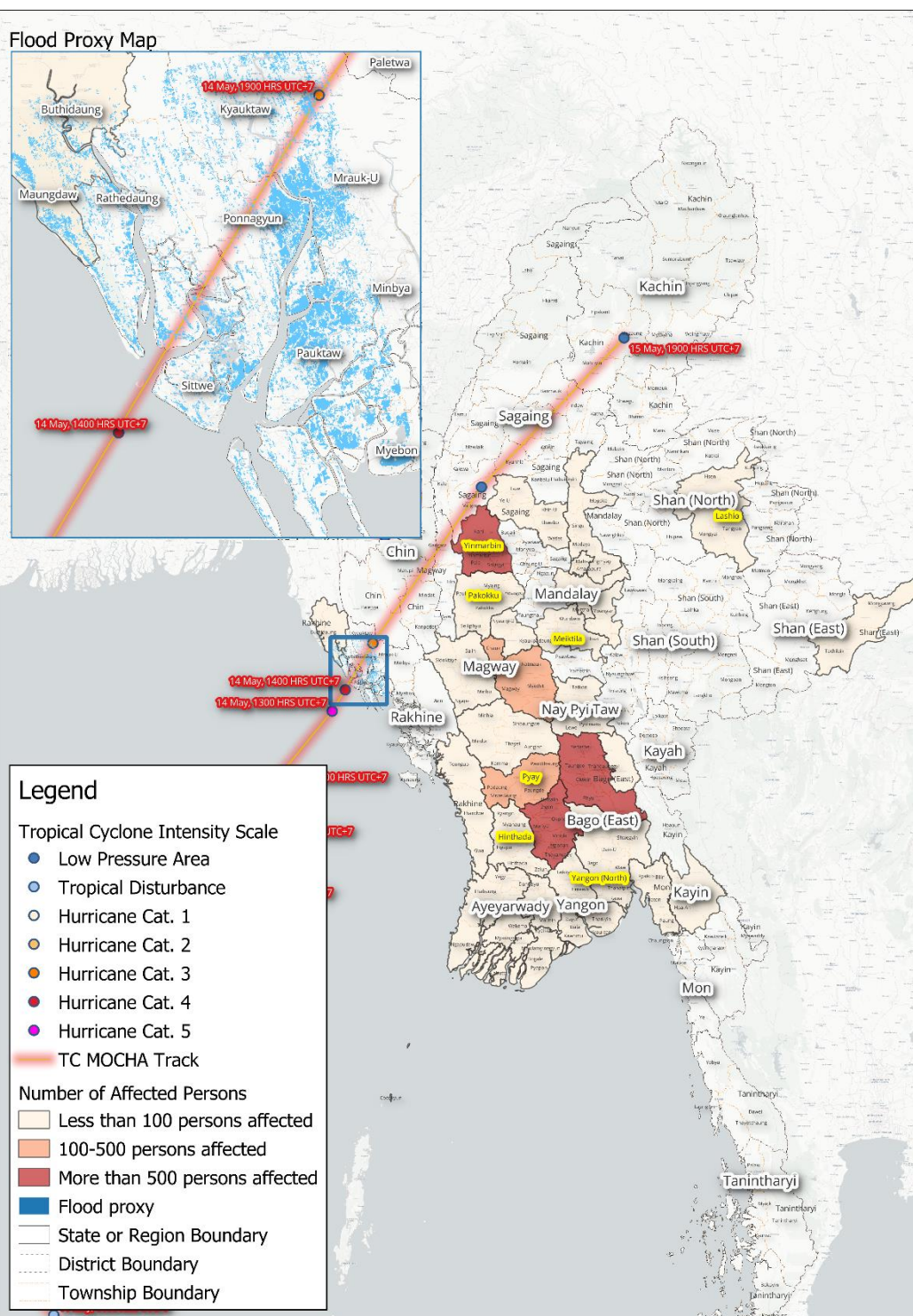
Tuesday, 16 May 2023, 2000HRS (UTC+7)

This Situation Update is provided by the AHA Centre for use of the ASEAN Member States and relevant stakeholders. The information presented is collected from various sources, including but not limited to ASEAN Member States' Government Agencies, UN, IFRC, NGOs, Humanitarian and Dialogue Partners, and News Organisations.

Tropical Cyclone MOCHA



Disclaimer: Figures are the latest updates as of 16 May 2023, 1815hrs (UTC+7)



3.4K
AFFECTED PERSONS



233K
PERSONS IN 396
EVACUATION CENTERS



7
DEAD PERSONS



27
INJURED PERSONS



18.6K
NON-FOOD ITEMS
(STOCKPILE)



1.4K
HOUSES DAMAGED



4.2K
SEARCH & RESCUE
PERSONNEL RESPONDING



1.3K
SEARCH & RESCUE
VEHICLES (LAND & WATER)



73
SHELTERS

Sources:
Impact and damages information coming from DDM Myanmar;
Administrative boundary - MIMU;
Flood proxy – EOS through Sentinel ASIA Network.



Note: Information contained in this document are additional information since the AHA Centre Situation Update #2 (14 May 2023) and until today (16 May 2023 at 1700 HRS UTC+7). You may refer to [Situation Update #1](#) and [Situation Update #2](#) for the previous information.

1. SUMMARY

METEOROLOGICAL HISTORY. Tropical Cyclone MOCHA, equivalent to a Category 4 hurricane (on the Saffir-Simpson scale), made its landfall on 14 May around 1300 HRS UTC+7, in Myanmar landmass, with maximum sustained winds of 250 km/h, and wind gusts up to 305 km/h (ASEAN DMRS). According to the Department of Meteorology and Hydrology (DMH) Myanmar, the banding features of the TC MOCHA crossing **Rakhine Coast, near Sittwe, was observed starting on 14 May 2023 at 1000 HRS UTC+7**, crossing near **Paletwa, Chin State starting on 14 May 2023 at 1800 HRS UTC+7**, near **Matupi, Chin State starting on 14 May at 2200HRS UTC+7**, near **Katha, Upper Sagaing Region on 15 May at 0600 HRS UTC+7**, and crossed Myanmar-China border on 15 May at 1000 HRS UTC+7.

PREPAREDNESS AND RESPONSE:

- a. As mentioned in the statement of the ASEAN Foreign Minister on the impact of TC MOCHA on Myanmar, **ASEAN Member States stand ready to support disaster relief efforts and delivery of humanitarian assistance**, including the deployment of the ASEAN-Emergency Response and Assessment Team (ASEAN-ERAT). The **ASEAN Foreign Ministers also encourage Myanmar to activate the role of the Secretary-General as the ASEAN Humanitarian Assistance Coordinator (SG-AHAC)** to ensure the overall objective of effective and timely response to the disaster's impact is achieved, with the assistance of the AHA Centre.
- b. A total of **17 townships in Rakhine State and 4 townships in Chin State have been declared by the Government of Myanmar as Natural Disaster-affected areas due to Tropical Cyclone MOCHA.**

2. ASSESSMENT OF IMPACTS AND HUMANITARIAN NEEDS

Impacts in Myanmar

- a. According to the analysis results from Earth Observatory Singapore (EOS) through Sentinel ASIA (Annex 1) overlaying with administrative boundary data from Myanmar Information Management Unit (MIMU), flood* was detected in seven (7) townships following the Track of Tropical Cyclone MOCHA, namely Sittwe, Pauktaw, Ponnagyun, Mrauk-U, Kyauktaw, Buthidaung, and Maungdaw Townships as illustrated in the inset Map Infographic on Page 1. **This is flood extent proxy and needs on-the-ground validation*
- b. According to the information from DDM Myanmar as of 16 May 2023 (numbers are expected to rise as data collection continues and as communication lines are restored):
 - i. A total of 3.4K affected persons*
 - ii. 233K persons are currently in 396 evacuation centres*
 - iii. A total of 7 persons dead and 27 injured confirmed*
 - iv. A total of 308 totally damaged houses, and 495 partially damaged houses*

**These are initial data from the minor affected areas. The data from Sittwe and other areas in Rakhine which are the most affected areas are still under collection.*



Anticipated Risks. According to the ASEAN Specialised Meteorological Centre (ASMC), drier conditions are predicted over much of Mainland Southeast Asia in the period of 15 – 21 May. Warmer than usual conditions are expected over much of Mainland Southeast Asia and parts of the western Maritime Continent in the period of 15 – 21 May (Annex. 2). According to the Joint Typhoon Warning Centre (JTWC), there is a tropical cyclone, referred to as Tropical Cyclone FABIEN. Based on available data, TC FABIEN is forecasted to move generally westward or moving away from the ASEAN Region and not directly impact the weather system in the ASEAN Region (Annex 3).

Humanitarian Needs (as indicated in the analysis from EOS) seven (7) townships are included in the flood proxy map based on the analysis from the data coming from Earth Observatory Singapore (EOS) through Sentinel ASIA. Some of the townships are also included in the areas which are declared as Natural Disaster-affected areas due to Tropical Cyclone MOCHA by Myanmar Authorities. The needs, as indicated in the previous situation update are Emergency Relief and Shelter; Health, Water, Sanitation, and Hygiene; and Food Security and Livelihood.

3. ACTIONS TAKEN AND RESOURCES MOBILISED

Response by Myanmar Authorities

a. Disaster Management Centre (DMC) has been activated and operationalised since 8 May 2023 to facilitate emergency monitoring and response operations in the affected areas. The operations also aim to assess and support the needs of the affected community, provide necessary logistics, and search and rescue operations.

b. Affected Areas

On 15 May, Areas in Rakhine State namely Kyaukpyu Township, Manaung township, Ramree Township, Ann Township, Sittwe Township, Pauktaw Township, Ponnagyun Township, Rathaedaung Township, Gwa Township, Taungup Township, Thandwe township, Maungdaw Township, Buthidaung Township, Kyauktaw Township, Minbya Township, Mrauk-U township, and Myebon township have been declared by the Government of Myanmar as Natural Disaster-affected areas due to Tropical Cyclone MOCHA.

On 16 May, areas in Chin State damaged due to the extremely severe cyclonic storm MOCHA (Tedim Township, Paletwa Township, Matupi Township, and Hakha Township) were also declared as natural disaster-affected areas by the National Disaster Management Committee (NDMC) under Section 11 of the Law.

c. **Search and Rescue.** The NDMC has deployed 3,214 Search and Rescue (SAR) personnel in Rakhine and 945 in Chin. SAR vehicles (Land and Water) are being utilised in Rakhine (203 and 139), Chin (84 and 15), Sagaing (395 and 77), and Magway (327 and 11).

d. **Evacuation**.** According to DDM, around 232,987 people are in 396 evacuation centres (EC); specifically, 2,275 in 19 EC in Chin; 5 EC in Sagaing, 1,726 in 23 EC in Magway; 7 persons in Mandalay; 462 persons in Yangon; and 228,517 persons in 349 EC in Ayeyarwady. Based on available information from the NDMC, 78,248 persons were evacuated to safe places specifically for the states/regions of Rakhine (55,623), Chin (1,055), and Ayeyarwady (2,820) as well as from IDP camps in Rakhine (18,750). Additionally, according to the NDMC, 73 shelters are available which can accommodate up to 35.1K persons (24.8K in 54 shelters in Rakhine, 3.2K in 5 shelters in Chin, 5.6K in 11 shelters in Sagaing, and 1.5K in 3 shelters in Magway).

***These are initial data from the affected areas. The data from areas in Rakhine which are the most affected areas are still under collection.*



- e. **Healthcare.** According to the NDMC, 107 Rapid Response Team personnel and 39 Medical Treatment Team personnel have been deployed to Rakhine while for Chin, 7 Rapid Response Team Personnel and 7 Medical Treatment Team personnel.
- f. **Non-Food Items (NFIs).** According to the NDMC, current NFI stockpile can cater to 18,606 households particularly 8,974 households in Rakhine; 1,309 households in Chin; 4,519 households in Sagaing; and 3,804 households in Magway.
- g. **Communications.** Nine (9) satellite phones are operational on the ground, seven (7) of which are in Rakhine and two (2) others in Chin.
- h. Data collection on the impacts and damages is ongoing by relevant authorities.

Response by the AHA Centre

- a. As mentioned in the statement of the ASEAN Foreign Minister on the impact of TC MOCHA on Myanmar, ASEAN Member States stand ready to support disaster relief efforts and delivery of humanitarian assistance, including the deployment of the ASEAN-Emergency Response and Assessment Team (ASEAN-ERAT). The ASEAN Foreign Ministers also encourage Myanmar to activate the role of the Secretary-General as the ASEAN Humanitarian Assistance Coordinator (SG-AHAC) to ensure the overall objective of effective and timely response to the disaster's impact is achieved, with the assistance of the AHA Centre.
- b. The AHA Centre EOC remains on **Alert Level RED (Active Response)**.
- c. The AHA Centre ICLT continue to provide support to DDM Myanmar in the development of situation updates/reports, logistics, communications, coordination, and other matters as necessary.
- d. The AHA Centre has activated the Web-Emergency Operations Centre (WebEOC) as an information-sharing platform between the AHA Centre Emergency Operations Centre in Jakarta and ICLT in Myanmar for TC MOCHA response.

Response by Humanitarian and Operational Partners

Disclaimer: To identify potential gaps, and needs and avoid duplication of humanitarian efforts, below are some of the actions taken by other humanitarian actors in response to the impacts of TC MOCHA in Myanmar.

- a. UNOCHA has released Flash Updates [#1](#), [#2](#), [#3](#), and the latest one as 15 of May: [Flash Update #4](#). Some updates include: (1) Health, relief items, shelter, and water, sanitation, and hygiene needs are already being reported; (2) Humanitarian partners are working to start rapid needs assessments (RNAs) in the field on 16 May to confirm the magnitude of impact from the cyclone and the immediate assistance that is required. A priority will be assessing the damage in the following locations: Sittwe, Pauktaw, Rathedaung, Maungdaw, Ponnagyun, Kyauktaw.
- b. As of 15 May 2023, UNICEF has released [Situation Report #2](#). UNICEF, in coordination with OCHA and other humanitarian organisations, is still working to assess the situation and needs on the ground.
- c. As of 15 May 2023, [WFP](#) is mobilizing emergency food and nutrition assistance to 800,000 people affected by the cyclone, many of them already displaced by conflict.
- d. As of 15 May 2023, [Malteser International](#) provides EUR 100,000 emergency relief and distributes relief goods. Since the first warning signs the staff and partners in



Myanmar were conducted preparations for the emergency relief by distributing food, drinking water, infant nutrition, and hygiene items as a precautionary measure to support the people.

- e. As of 15 May 2023, [Oxfam](#) and partners are evaluating the impacts of TC MOCHA to initiate a humanitarian effort, offering clean water, sanitation, hygiene, emergency cash, and food.
- f. As of 15 May 2023, [Plan International](#) dispatching the emergency teams to Sittwe to support the local teams. Plan International Myanmar has stocked up immediate relief items such as dry foods, water and first-aid kits, ready to be dispatched to the affected population in northern Rakhine.
- g. As of May 15, 2023, [Johanniter](#), together with its partner organization Meikswe Myanmar, is sending food and hygiene kits to 3,000 families in the Pauk Taw township, located 25 kilometers north of Sittwe. In the upcoming days, relief goods will be provided to a total of 28,000 people in 32 villages in Rakhine province.
- h. As of 15 May 2023, [DRC](#) is on the ground and right now assessing the damages and needs among the worst-affected areas along the Myanmar-Bangladesh border. DRC is preparing to roll out and scale up our emergency aid response and well-positioned with adequate expertise and resources in Myanmar – including with significant presence in what are right now the worst-affected areas.
- i. As of 15 May 2023, [Finn Church Aid \(FCA\)](#) has allocated 100,000 euros from its disaster fund for humanitarian aid work necessitated by the damage caused by the Cyclone Mocha in Myanmar.
- j. As of 13 May 2023, UNOSAT published the [Population Exposure Analysis](#) for Bangladesh and Myanmar.

4. PLAN OF ACTIONS

The AHA Centre's Plan

- a. The AHA Centre is also in the preparation process of deployment for the ASEAN-Emergency Response and Assessment Team (ASEAN-ERAT) members. The ASEAN-ERAT team is on standby and will be deployed immediately once approved by DDM Myanmar, tentatively on Wednesday (17 May) or Thursday (18 May). The ASEAN-ERAT team consists of 8-12 persons coming from ASEAN Member States, the AHA Centre, and ASEAN Secretariat, with expertise in coordination, assessment, information management, and logistics.
- b. Disaster Emergency Logistics System for ASEAN (DELSA) relief items from the warehouse in Subang, Malaysia and the satellite warehouse in Chai Nat, Thailand are ready to deploy, pending the approval from DDM Myanmar and clearance on the utilisation of the military aircraft, in coordination with the ASEAN Military Representative and the ASEAN Military Ready Group. DDPM Thailand has expressed their willingness to support the AHA Centre for the mobilisation of DELSA relief items from the satellite warehouse in Chai Nat, Thailand. NADMA Malaysia is also on standby to provide support to mobilise DELSA relief items from Subang, Malaysia either using Malaysia Military Aircraft or facilitating a landing permit for Myanmar Military Aircraft.
- c. The AHA Centre team, including the ICLT team in Nay Pyi Taw will continue to support Myanmar's response effort under close coordination with DDM Myanmar.



- d. AHA Centre, in coordination with DDM Myanmar, has also been exploring and preparing local procurement for several items that the affected population might need and available within the country.
- e. The AHA Centre Executive Director and Director of Operations are scheduled to arrive in Myanmar on 17 May 2023 to further coordinate and support the emergency operations of TC MOCHA in Myanmar.
- f. The AHA Centre will continuously update the impact information in the ASEAN Disaster Information Network (ADINet) on the impacts of TC MOCHA with the following identification numbers AHADID: [AHA-TC-2023-000504-MMR](#) | GLIDE Number: TC-2023-000069-MMR
- g. The AHA Centre will release Situation Update #4 of Tropical Cyclone MOCHA tentatively on Friday, 19 May 2023.

Prepared by:

The AHA Centre - Emergency Operations Centre (EOC)

ABOUT THE AHA CENTRE

The AHA Centre - ASEAN Coordinating Centre for Humanitarian Assistance on disaster management - is an inter-governmental organisation established by 10 ASEAN Member States – Brunei Darussalam, Cambodia, Indonesia, Lao PDR, Malaysia, Myanmar, Philippines, Singapore, Thailand and Viet Nam - to facilitate the cooperation and coordination among ASEAN Member States and with the United Nations and international organisations for disaster management and emergency response in the region.

The ASEAN Coordinating Centre for Humanitarian Assistance on disaster management (AHA Centre), Graha BNPB 13th Floor, JL Raya Pramuka Kav 38, East Jakarta, 13210, Indonesia
Phone: +62-21-210-12278 | www.ahacentre.org | email: info@ahacentre.org

Contact:

- 1) Dir Thiri Maung, Director of Emergency Operations Center of Myanmar, thirimaung.rrd@gmail.com
- 2) Lawrence Anthony Dimailig, Assistant Director for Disaster Monitoring and Analysis, lawrence.dimailig@ahacentre.org
- 3) Keith Paolo Landicho, Disaster Monitoring & Analysis Officer, keith.landicho@ahacentre.org
- 4) Sadhu Zukhruf Janottama, Disaster Monitoring & Analysis Officer, sadhu.janottama@ahacentre.org
- 5) Mohammad Fadli, AHA Centre – Pacific Disaster Center (PDC) Liaison Officer, mfadli@pdc.org



ANNEXES

Annex 1. Flood proxy map in Sittwe due to TC MOCHA – EOS through Sentinel ASIA

EOS-RS Flood Proxy Map: Myanmar, Cyclone Mocha, 14 May 2023, v0.3

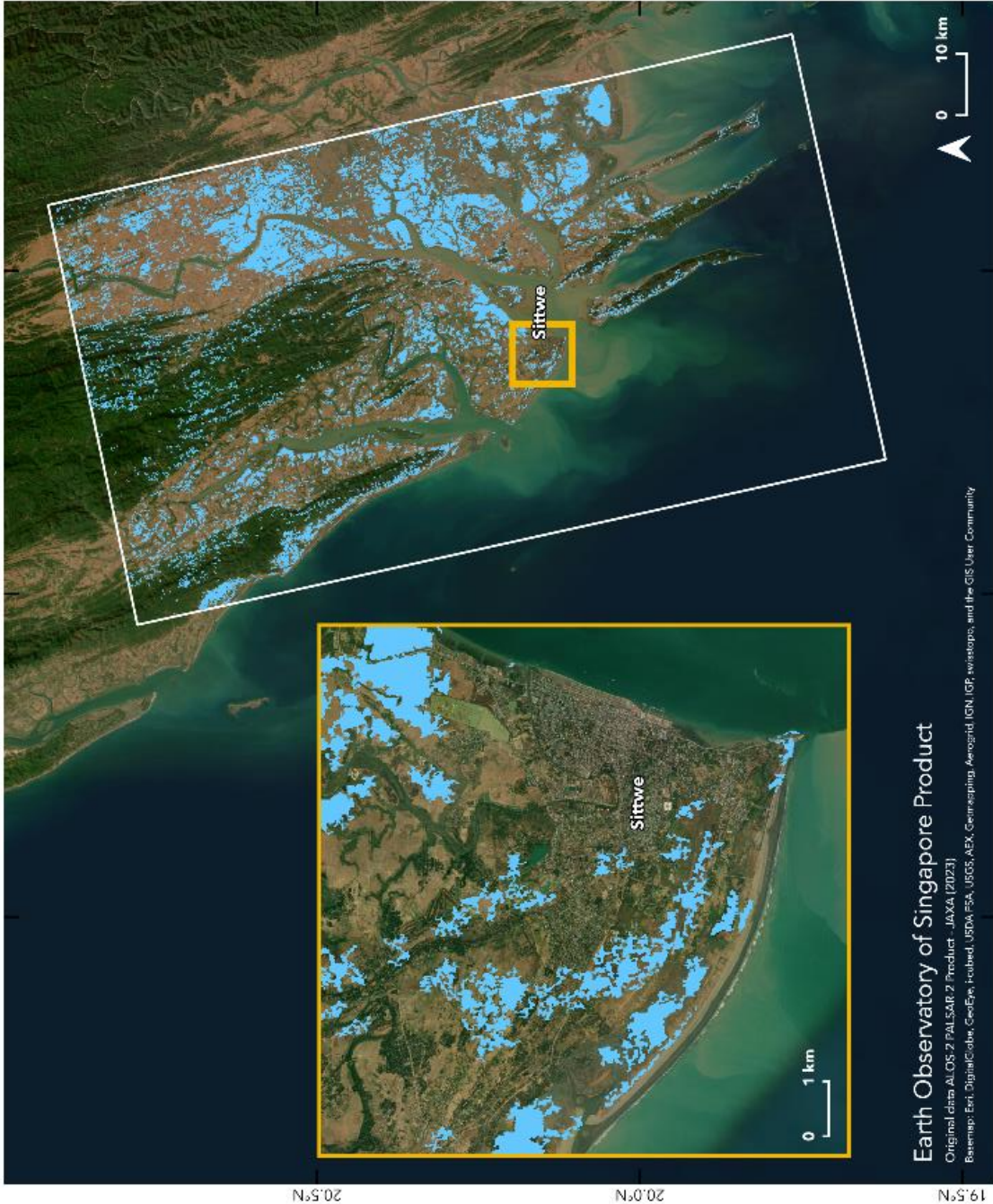
The Earth Observatory of Singapore - Remote Sensing Lab (EOS-RS) created this preliminary Flood Proxy Map (PFPM) depicting areas that are likely flooded in northern Bakhine, Myanmar, due to Cyclone Mocha which made landfall on 14 May 2023. This map was derived from synthetic aperture radar (SAR) images acquired by the ALOS-2 satellite operated by the Japan Aerospace Exploration Agency (JAXA) before (19 Feb 2023) and during (14 May 2023) the event.

The image covers an area indicated by the large white polygon. Each light blue pixel measures about 25 m across. This flood proxy map should be used as a guide to identify areas that are likely flooded, and is less reliable over urban and vegetated areas.

Data were provided by Sentinel Asia and analyzed by the Earth Observatory of Singapore - Remote Sensing Lab (EOS-RS).

More map details and files at: <http://eos-rs-products.earthobservatory.sg/>
EOS-RS_202305_Myanmar_Cyclone_Mocha/

Credits: Earth Observatory of Singapore - Remote Sensing Lab (EOS-RS), Original data ALOS-2 PALSAR-2 Product - JAXA (2023)



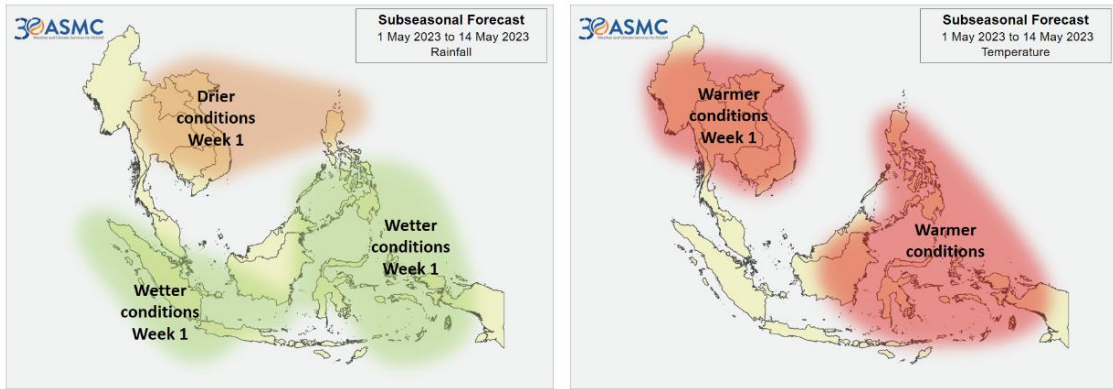
Earth Observatory of Singapore Product

Original data: ALOS-2 PALSAR-2 Product - JAXA (2023)

Basemap: Esri, DigitalGlobe, GeoEye, Earthstar, USDA, FSA, USGS, AEX, GeoEye, AeroGRID, IGN, IGP, swisstopo, and the GIS User Community



Annex 2. Subseasonal Forecast – ASMC



Annex 3. Tropical Cyclone Warnings – JTWC

JOINT TYPHOON WARNING CENTER

