



ONE ASEAN
ONE RESPONSE

WEEKLY DISASTER UPDATE

Week 17
24-30 April 2023

- ahacentre.org
- ahacentre
- @ahacentre
- @ahacentre

The AHA Centre, GRAHA BNPB 13th floor,
Jl. Raya Pramuka Kav. 38, East Jakarta 13120 Indonesia

SOURCES

ASEAN Disaster Monitoring & Response System (DMRS);
ASEAN Specialised Meteorological Centre (ASMC); Joint
Typhoon Warning Centre (JTWC);

Cambodia: NCDM;
Indonesia: BNPB, BMKG, PVMBG;
Philippines: DSWD, PHIVOLCS;
Thailand: DDPM;
Viet Nam: VDDMA;

Various news agencies.

DISCLAIMER

The AHA Centre was established in November 2011 by the
Association of Southeast Asian Nations (ASEAN) Member
States to facilitate cooperation and coordination among
Member States, relevant agencies of the United Nations
and international organisations in disaster management and
emergency response.

This update consists of significant natural disaster events
that occurred in ASEAN Member States – Brunei
Darussalam, Cambodia, Indonesia, Lao PDR, Malaysia,
Myanmar, Philippines, Singapore, Thailand, and Viet Nam.
The disasters recorded include Drought, Flood, Earthquake,
Tsunami, Volcano, Wind, Landslide, and Storm.

The use of boundaries, geographic names, related
information and potential considerations for response are
for reference, not warranted to be error-free or implying
official endorsement from ASEAN Member States.

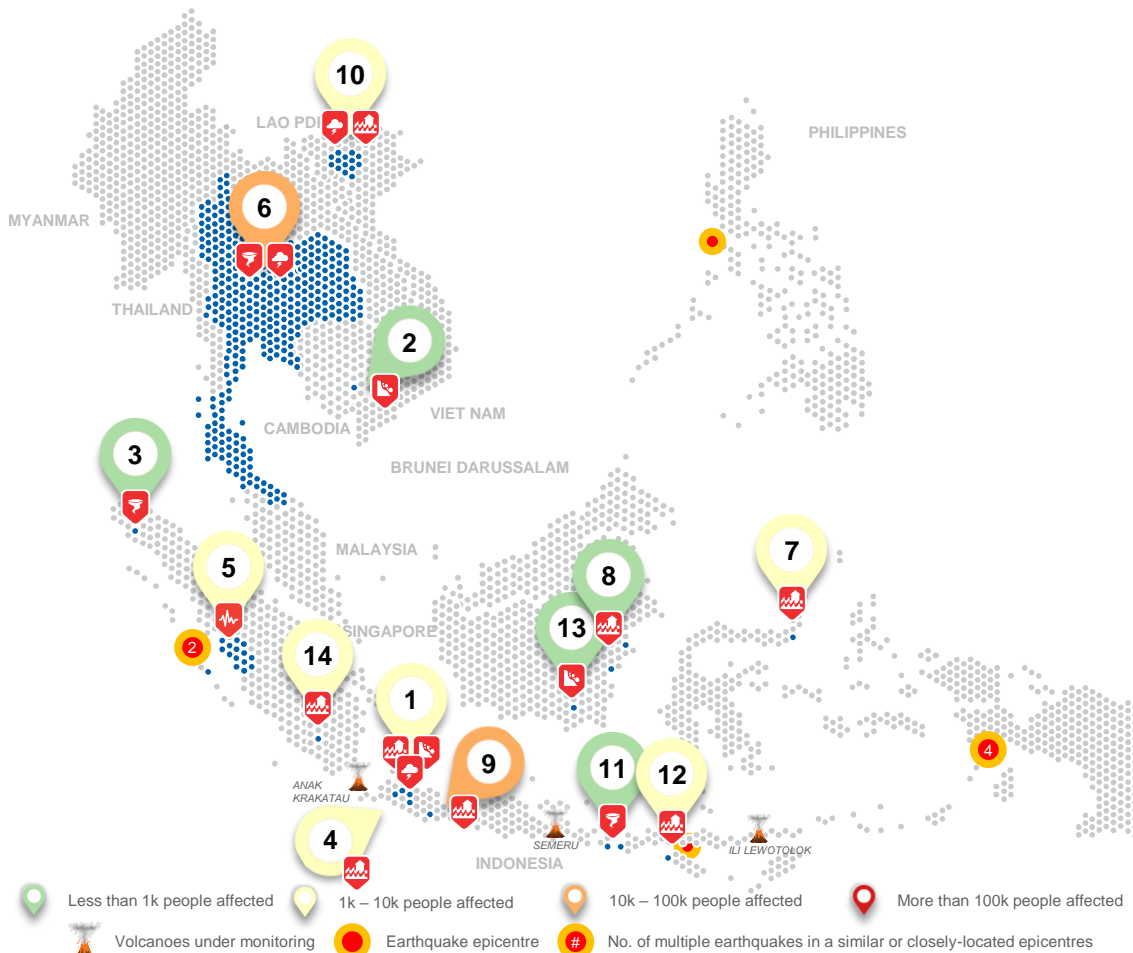
© 2023 AHA Centre.
All rights reserved.

For inquiries, comments, and/or suggestions,
you may reach us through dma@ahacentre.org

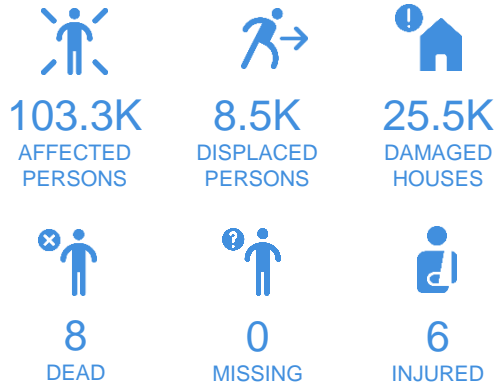


You are receiving this email because you are
registered in our distribution list.

SCAN TO SUBSCRIBE



REGIONAL TALLY



01 Indonesia, Landslide in [Purwakarta](#); Storm in [Bogor](#); Flooding in [Bogor \(2\)](#); Flooding and Landslide in [Bandung](#); Flooding in [Bandung \(West Java\)](#)
24, 24, 24 & 30, 26, 27 Apr 2023

02 Cambodia, Landslides in [Saang District](#) (Kandal)
24 Apr 2023

03 Indonesia, Strong Wind in [Nagan Raya](#) (Aceh)
24 Apr 2023

04 Indonesia, Flooding in [South Tangerang City](#) (Banten)
24 Apr 2023

05 Indonesia, [M7.3 Earthquake in Sumatra](#) (corrected to M 6.9)
25 Apr 2023

06 Thailand, Storms and Winds in [39 Provinces](#)
26 Apr 2023

07 Indonesia, Flooding in [Bolaang Mongondow Timur](#) (North Sulawesi)
26 Apr 2023

08 Indonesia, Flooding in [Penajam Paser Utara](#) and [Samarinda City](#) (East Kalimantan)
26, 30 Apr 2023

09 Indonesia, Flooding in [Cilacap \(2\)](#) (Central Java)
26, 27 Apr 2023

10 Viet Nam, Storms and Floods in [Northern Provinces](#)
28 Apr 2023

11 Indonesia, Tornado in [Southwest Sumba](#) (East Nusa Tenggara)
28 Apr 2023

12 Indonesia, Flooding in [West Sumbawa](#) and [Central Lombok](#) (West Nusa Tenggara)
28, 28 Apr 2023

13 Indonesia, Landslide in [Tapin](#) (South Kalimantan)
29 Apr 2023

14 Indonesia, Flooding in [Ogan Komering Ulu](#) (South Sumatra)
30 Apr 2023

Note: Estimations are based on data reported/confirmed by National
Disaster Management Organisations of each respective ASEAN
Member State and other verified sources

REGIONAL SUMMARY:

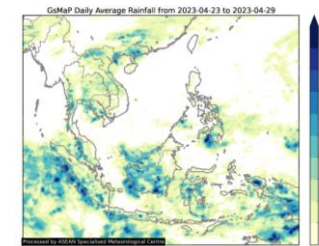
For the seventeenth week of 2023, a total of 21 disaster events (caused by flooding, storms, and wind hazards; and landslides and earthquakes) were reported for the region particularly in Cambodia, Indonesia, Thailand, and Viet Nam. The National Committee on Disaster Management ([NCDM](#)) of Cambodia reported the collapse of a riverbank. *Badan Nasional Penanggulangan Bencana (BNPB)* reported floods caused by heavy rainfall, landslides due to unstable soil conditions, severe local storms, and tornadoes. Thailand's Department of Disaster Prevention and Mitigation ([DDPM](#)) reported that severe local storms and strong winds have affected 39 of its provinces. The Viet Nam Dyke and Disaster Management Authority ([VDDMA](#)) reported that storms and floods have affected northern provinces.

HIGHLIGHT:

According to [BNPB](#), prolonged heavy rainfall has caused flooding in Cilacap Regency in Central Java. The reported flooding has affected 14.1K families (56.3K people) particularly in Cilacap Utara, Cilacap Selatan, and Cilacap Tengah Subdistricts. The floods also caused the internal displacement of 221 people and for 14.1K houses to be damaged. The disaster is still within the local capacity to respond. Rapid assessments, evacuation, and other necessary action have been undertaken by the responsive authorities.

According to [DDPM](#), thunderstorms, winds, and hail have affected 5.6K families (16.9K persons) across 39 provinces. 5.6K houses have been damaged. [DDPM](#) continues to conduct assessments, evacuation, and necessary actions to address the situation. The AHA Centre stands ready to support [BNPB](#) and [DDPM](#) if the need arises.

HYDRO-METEO-CLIMATOLOGICAL:



For the past week, data from the ASEAN Specialised Meteorological Centre ([ASMC](#)) showed medium to high 7-day average rainfall spreading across Indonesia, Brunei Darussalam, Malaysia, and central to southern portions of the Philippines. Generally low-medium rainfall was observed in Mainland Southeast Asia. According to the Joint Typhoon Warning Centre ([JTWC](#)), currently, there are no active tropical cyclone advisories for the region.

GEOPHYSICAL:

Eight (8) significant earthquakes (M≥5.0) were recorded by Indonesia's Badan Meteorologi, Klimatologi, dan Geofisika ([BMKG](#)) and Philippine Institute of Volcanology and Seismology ([PHIVOLCS](#)). Mount Semeru (alert level III) and Dukono (alert level II) in Indonesia, and Taal (alert level 1), Mayon Volcano (alert level 1), and Kanlaon (alert level 1) in the Philippines reported recent volcanic activity according to Pusat Vulkanologi dan Mitigasi Bencana Geologi ([PVMBG](#)) and [PHIVOLCS](#).

OUTLOOK:

According to the ASEAN Specialised Meteorological Centre ([ASMC](#)), for the coming week, drier conditions are predicted over much of central and eastern Mainland Southeast Asia, as well as northern parts of the Philippines. Wetter conditions are also predicted over much of the Maritime Continent. Warmer than usual temperatures is predicted over much of the eastern half of the Maritime Continent and Mainland Southeast Asia. For the regional assessment of extremes, there is a small increase in chance of very heavy rainfall over parts of Sumatra, Java, and the Maluku Islands; there is a moderate increase in chance of much warmer than usual temperatures over parts of eastern Mainland Southeast Asia, including Lao PDR and northern Viet Nam, as well as coastal parts of Myanmar. The tropical Pacific Ocean is now in ENSO neutral state. In this state, the contribution to rainfall of the ENSO is small to non-existent on a seasonal timescale.