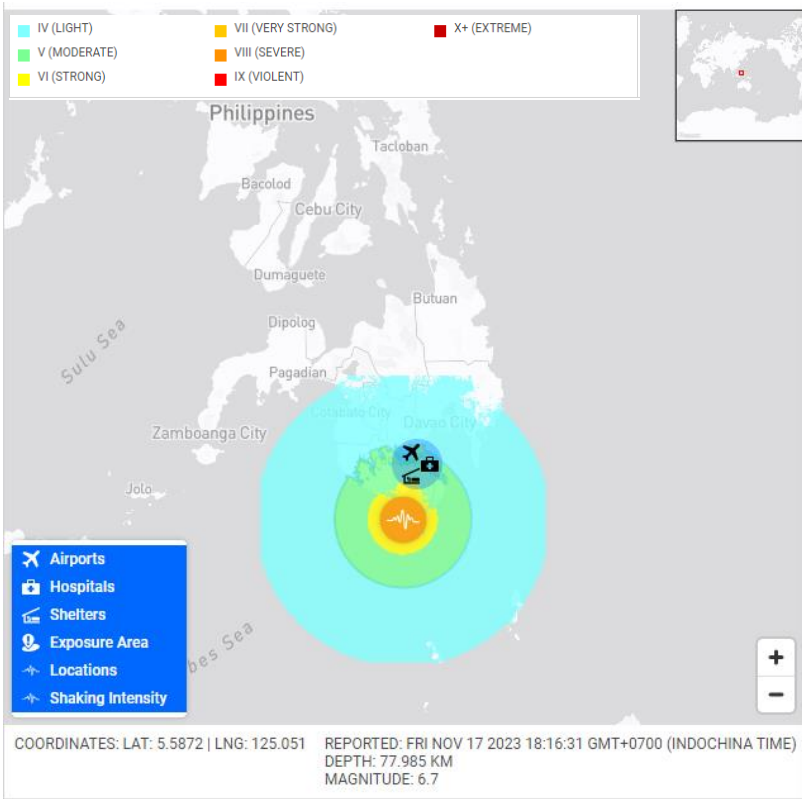


FRIDAY
17 NOV 2023
1930 HRS UTC +7

M6.8 EARTHQUAKE IN DAVAO OCCIDENTAL PHILIPPINES FLASH UPDATE #1



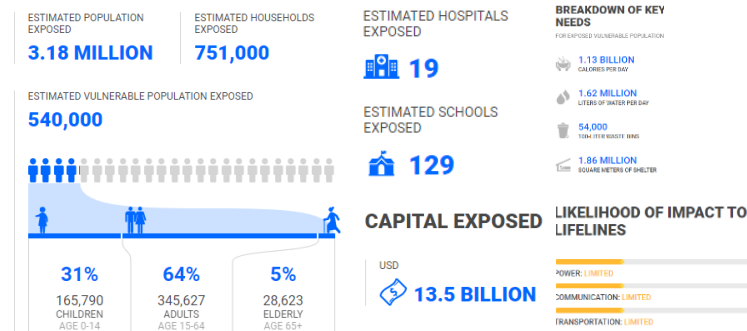
ONE ASEAN ONE RESPONSE



KEY FIGURES

Disclosure: The names, boundaries, colors, denominations, and any other information shown on the associated maps do not imply, on the part of the AHA Centre and PDC, any judgment on the legal status of any territory, or any endorsement or acceptance of such boundaries. Please refer to PDC Terms of Use for all PDC-generated information and products.

POPULATION EXPOSED



- **OVERVIEW:** At 1614 HRS UTC+8 of 17 November 2023, a **M7.2 tectonic earthquake, corrected to M6.8**, with epicentre at 5.37N, 125.15E and a depth of 10 km (located 30 km south 81 degrees west of Sarangani, Davao Occidental) rocked Southern Mindanao as reported by the Philippines' National Disaster Risk Reduction and Coordination Council ([NDRRMC](#)) and the Philippine Institute of Volcanology and Seismology ([PHIVOLCS](#)).
- **PRELIMINARY ANALYSIS:** According to the [PHIVOLCS](#) Earthquake Intensity Scale, this earthquake is considered very strong. Many people are frightened; many run outdoors. Some people lose their balance. motorists feel like driving in flat tires. Heavy objects or furniture move or may be shifted. Small church bells may ring. Wall plaster may crack. Very old or poorly built houses and man-made structures are slightly damaged though well-built structures are not affected. Limited rockfalls and rolling boulders occur in hilly to mountainous areas and escarpments. Trees are noticeably shaken. It is estimated that 3.18 million people, 751,000 households, and \$13.5 Billion (USD) of buildings and infrastructure (total replacement value) are concentrated within this radius.
- **LIKELIHOOD OF IMPACT TO LIFELINES** (Source: DisasterAWARE):
 - Power: LIMITED
 - Communication: LIMITED
 - Transportation: LIMITED
- **ANALYSIS:** According to the [PHIVOLCS](#), **no destructive tsunami threat** exists based on available sea-level data. However, earthquakes of this size may generate unusual sea level disturbances that may be observed along coasts near earthquake epicenter of Davao Occidental. Pacific Tsunami Warning Center ([PTWC](#)) further assessed this earthquake and mentioned that there is **NO TSUNAMI THREAT**.
- **AFTERSHOCKS:** [PHIVOLCS](#) advised the aftershocks are expected. Based on the earthquake monitoring of [PHIVOLCS](#), 10 minor earthquakes have been recorded within the vicinity of Sarangani Province within 2 hours of this earthquake.
- **PREPAREDNESS AND RESPONSE:**
 - [NDRRMC](#) Response Cluster has been activated.
 - Alert status at the National Disaster Risk Reduction and Management Operations Center (NDRRMOC) is raised to **BLUE** to closely monitor, consolidate, and report all related incidents and to ensure prompt coordination with concerned agencies and offices. Likewise, uniformed personnel including the police and military have been detailed at the NDRRMOC to ensure continuous coordination and to assist in facilitating the submission of consolidated preparedness measures of respective agencies.
 - Local authorities have suspended work in the City of General Santos in Sarangani pending structural integrity assessment. People are advised to check surroundings for safety.
 - Continuous monitoring is being conducted by [PHIVOLCS](#). Advisories have been released and people are advised to remain vigilant for potential impacts and aftershocks.
- The AHA Centre will continue to monitor for further developments and issue necessary updates.

DATA SOURCES
ASEAN Disaster Monitoring & Response System (DMRS); Pacific Disaster Center (PDC Global); Pacific Tsunami Warning Center (PTWC);
Philippines: NDRRMC, PHIVOLCS;
Verified news media agencies.

DISCLAIMER
The AHA Centre was established in November 2011 by the Association of Southeast Asian Nations (ASEAN) Member States to facilitate cooperation and coordination among the Member States, relevant agencies of the United Nations, and international organisations in disaster management and humanitarian assistance.
The use of boundaries, geographic names, related information and potential considerations for response are for reference, not warranted to be error free or implying official endorsement from ASEAN Member States.

© 2023 AHA Centre.
All rights reserved.
You are receiving this email because you are registered in our distribution list.

Our mailing address is:
AHA Centre,
GRAHA BNPB 13th Floor,
Jl. Raya Pramuka Kav. 38,
Jakarta 13120 Indonesia