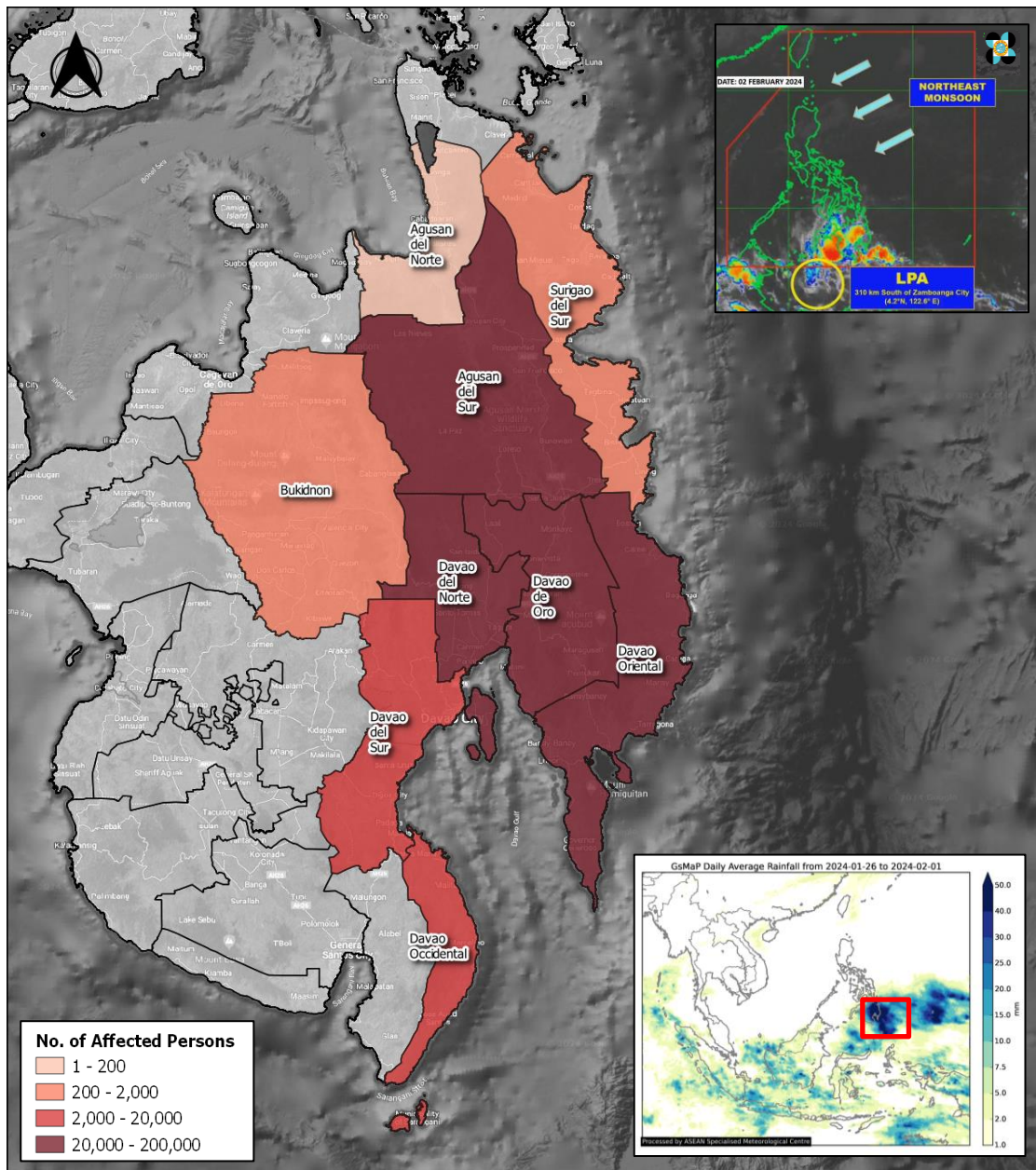


FRIDAY  
2 FEB 2024  
2130 HRS UTC +7

# FLOODING AND LANDSLIDES IN REGION X, XI, AND CARAGA, THE PHILIPPINES FLASH UPDATE #1



ONE ASEAN ONE RESPONSE



## KEY FIGURES

Disclosure(s): Estimations are based on data reported/confirmed by National Disaster Management Organisations of the respective ASEAN Member State (National Disaster Risk Reduction and Management Council (NDRRMC)) and other verified sources



**OVERVIEW:** According to the National Disaster Risk Reduction and Management Council (NDRRMC), the Northeast Monsoon and the Trough of the Low Pressure Area have affected Mindanao. The trough of the Low Pressure Area (LPA) continued to bring light to heavy rains in Mindanao until 2 February 2024. This resulted in flooding and landslides in several areas over Mindanao in the Philippines.

- IMPACTS:** According to the National Disaster Risk Reduction and Management Council (NDRRMC) as of 1600 HRS UTC+7, 2 Feb:
- Related Incidents: 139 flooded areas (1 subsided, 7 receding), 57 rain-induced landslides.
  - Affected population:
    - 120.7K families (471.9K persons) have been affected from 355 Barangays in the Region X, XI, and CARAGA
    - 188.4K persons displaced and 62.4K of which are reportedly inside 290 evacuation centres
    - 5 persons dead and 7 persons injured (for validation)
  - Damages:
    - 36 damaged houses (11 partially, 25 totally) have been reported in Regions XI and CARAGA
    - 131 road sections (75 of which are still not passable) and 13 bridge sections (11 of which are still not passable) have been affected.
    - The cost of damage to infrastructure amounting to 1.1K USD.
  - Critical Lifelines:
    - A total of 8 cities/municipalities experienced power outages, 4 of which have had power restored;
    - A total of 2 cities/municipalities are still experienced water supply interruption.

**FORECAST:** According to the forecast from the Philippine Atmospheric, Geophysical, and Astronomical Services Administration (PAGASA) on 2 February 2024, the trough of the low-pressure area may bring significant amount of rainfall over Zamboanga Peninsula and BARMM. Under these conditions, flooding and rain-induced landslides are likely especially in areas that are highly or very highly susceptible to these hazards.

- PREPAREDNESS AND RESPONSE:**
- On 2 February 2024, NDRRMC-OCB remains on ALERT Status BLUE (half of the members of the NDRRMC are on standby for any emergencies caused by this disaster)
  - NDRRMC Memorandum has been issued regarding the preparation for the Trough of LPA in Mindanao.
  - NDRRMC has disseminated 23 emergency alert and warning messages to the affected provinces from 29 January to 2 February 2024
  - 45.6K USD worth of assistance has been provided in the form of Family Food Pack and Food Items to the affected communities.
  - A total of 3.6K persons from region XI and CARAGA were pre-emptively evacuated.
  - PAGASA monitored and provided regular advisories and early warnings on the development of weather systems and their potential impacts.

The AHA Centre will continue to closely monitor for further developments and issue necessary updates.

**DATA SOURCES**  
ASEAN Disaster Monitoring & Response System (DMRS), ASEAN Disaster Information Network (ADINet); Pacific Disaster Center (PDC Global); ASEAN Specialised Meteorological Centre (ASMC); Philippines: NDRRMC, PAGASA; Verified news media agencies

**DISCLAIMER**  
The AHA Centre was established in November 2011 by the Association of Southeast Asian Nations (ASEAN) Member States to facilitate cooperation and coordination among the Member States, relevant agencies of the United Nations, and international organisations in disaster management and humanitarian assistance.  
The use of boundaries, geographic names, related information and potential considerations for response are for reference, not warranted to be error free or implying official endorsement from ASEAN Member States.

© 2024 AHA Centre.  
All rights reserved.  
You are receiving this email because you are registered in our distribution list.

Our mailing address is:  
AHA Centre,  
GRAHA BNPB 13<sup>th</sup> Floor,  
Jl. Raya Pramuka Kav. 38,  
Jakarta 13120 Indonesia