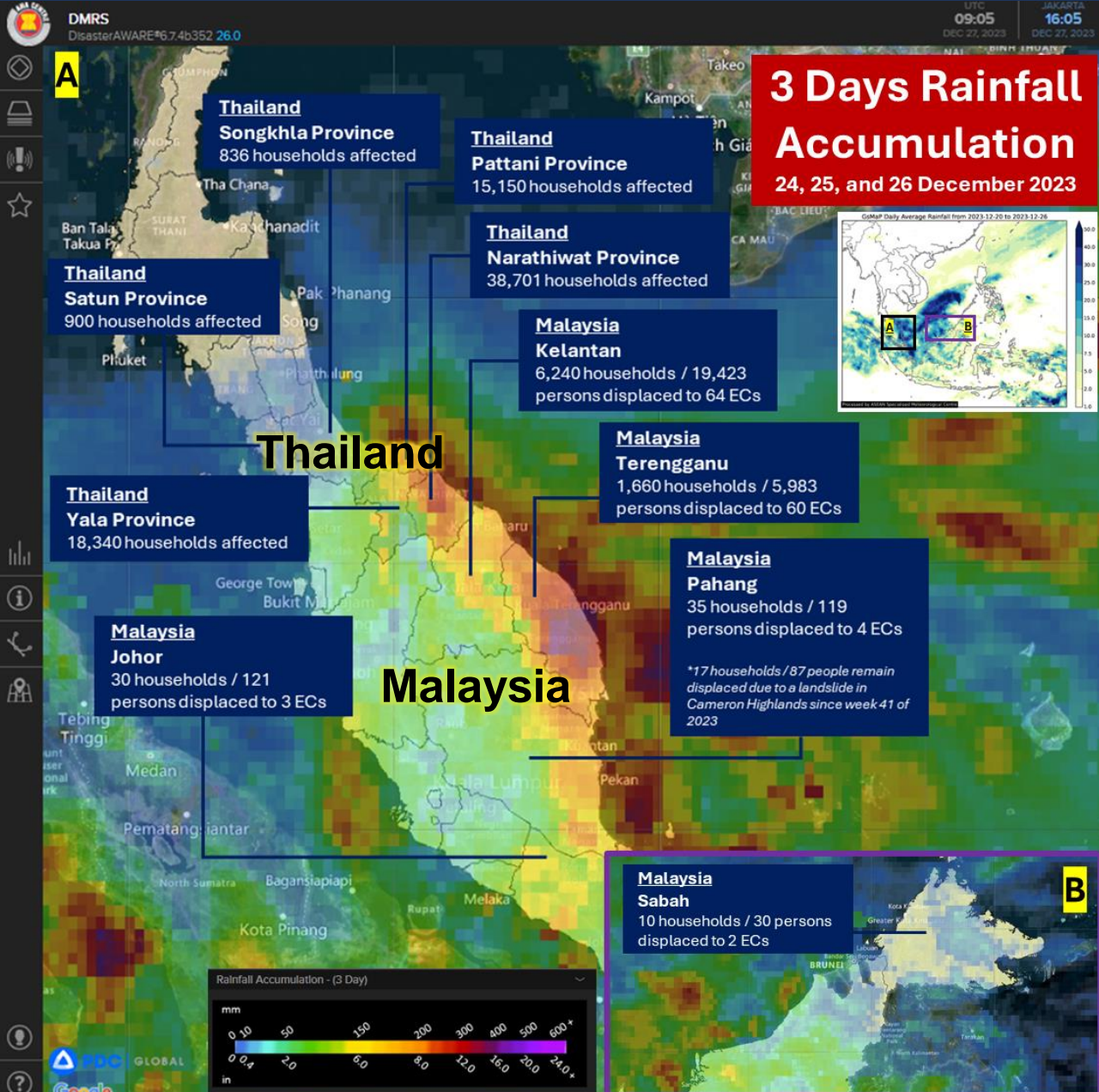
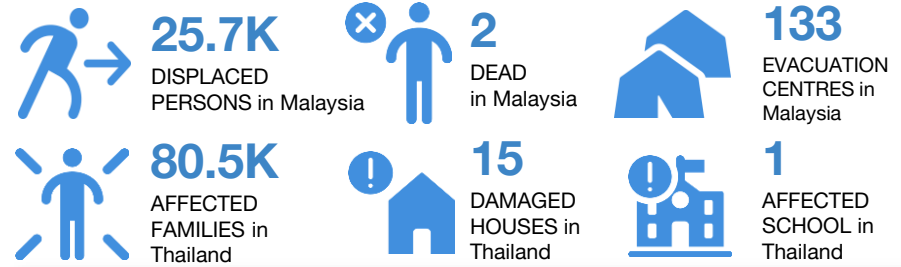


WEDNESDAY
27 DEC 2023
2030 HRS UTC +7

FLOODING, LANDSLIDES, AND STORMS IN PENINSULAR MALAYSIA AND SOUTHERN THAILAND FLASH UPDATE #1



KEY FIGURES



Disclosure(s): Estimations are based on data reported/confirmed by National Disaster Management Organisations of the respective ASEAN Member State (Agensi Pengurusan Bencana Negara (NADMA) Malaysia, and Department of Disaster Prevention and Mitigation (DDPM) Thailand) and other verified sources

MALAYSIA

IMPACTS: As of 27 Dec 2023, 1900 HRS UTC+7, Agensi Pengurusan Bencana ([NADMA](#)) Malaysia reported flooding and in 17 districts in the states of **Johor, Kelantan, Pahang, Sabah, and Terengganu** with a total of **2 persons dead** and **7,975 families/ 25,676 persons** displaced in **133 evacuation centres**. In addition, a total of 17 families / 87 people remain displaced due to a landslide at Cameron Highlands (Pahang) since week 41 of 2023. According to *Jabatan Kerja Raya (JKR)* as of 27 Dec 2023, a total 82 roads affected by flooding, 10 roads are affected by slope landslides, 2 roads collapsed, and 2 bridges were damaged.

RESPONSE: The Special Malaysian Disaster Assistance and Rescue Team (SMART) facilitated the evacuation of affected communities who are now being served in evacuation centres. The *Ketua Pengarah Bomba (KP BOMBA)* provided air assistance through the service of three helicopter to deliver relief support and transport victims with urgent medical needs. Continuous monitoring and provision of regular updates and advisories are being conducted by the *Jabatan Meteorologi Malaysia (JMM)* and *NADMA*.

THAILAND

IMPACTS: According to the Department of Disaster Prevention and Mitigation ([DDPM](#)) Thailand, from 22-27 Dec 2023, continuous rain resulted to flooding, landslides, and storm in the Southern Region of Thailand. A total of **80,491 households** (at about 400K persons) affected in **Satun, Songkhla, Pattani, Narathiwat, and Yala Provinces** were reported by Department of Disaster Prevention and Mitigation ([DDPM](#)) Thailand. In addition, the flooding in Narathiwat also affected a school, while a storm in Songkhla reportedly damaged 15 houses. The floods still persist in the five provinces as of 27 Dec, 1800 HRS UTC+7 and **73,927 households** (at about 369K persons) are still affected. According to the report, the situation in Songkhla Province has been put under control, while the flood depths in Satun, Pattani, Narathiwat, and Yala have reportedly decreased.

RESPONSE: Relief operations to the affected communities are ongoing by relevant agencies/organisations. Disaster responders, including uniformed personnel have been deployed in the affected areas to support the provision of food packages and survival kits, as well as conduct damage surveys and assessments. Authorities have also provided assistance to alleviate the flooding situation by expediting the drainage of water in the flooded areas. The Prime Minister and Minister of Finance, Mr. Srettha Thavisin, along with the Deputy Minister of Interior Mr. Kriang Kalitnan, visited the flooded areas to conduct inspection and provide support to the affected communities. Continuous monitoring and provision of regular updates and advisories are being conducted by the Thailand Meteorological Department ([TMD](#)) and [DDPM](#).

ANTICIPATED RISK

- According to the ASEAN Specialised Meteorological Centre ([ASMC](#)), wetter conditions are expected over parts of the western Maritime Continent, including Peninsular Malaysia and Southern Region of Thailand until 25 Dec 2022.
- According to [MetMalaysia](#), Northeast Monsoon-related storms is still expected to last until 25 Dec, and potentially bringing strong winds, big waves and continues heavy rainfall in eastern parts of peninsula, Sabah, and western parts of Sarawak, Malaysia. [MetMalaysia](#) has also issued flood warning for Pahang and Johor States.
- According to [TMD](#), Northeast Monsoon still prevails over the Gulf of Thailand, Southern Region, and Andaman Sea. This situation may cause heavy rains in the Southern Region of Thailand.

THE AHA CENTRE

The AHA Centre will continue to closely monitor for further developments and issue necessary updates.

DATA SOURCES

ASEAN Disaster Monitoring & Response System (DMRS), ASEAN Disaster Information Network (ADINet); Pacific Disaster Center (PDC Global); ASEAN Specialised Meteorological Centre (ASMC); Malaysia: NADMA, NDCC, MET Malaysia, JKR; Thailand: DDPM, TMD; Verified news media agencies

DISCLAIMER

The AHA Centre was established in November 2011 by the Association of Southeast Asian Nations (ASEAN) Member States to facilitate cooperation and coordination among the Member States, relevant agencies of the United Nations, and international organisations in disaster management and humanitarian assistance. The use of boundaries, geographic names, related information and potential considerations for response are for reference, not warranted to be error free or implying official endorsement from ASEAN Member States.

© 2023 AHA Centre.
All rights reserved.

You are receiving this email because you are registered in our distribution list.

Our mailing address is:
AHA Centre,
GRAHA BNPB 13th Floor,
Jl. Raya Pramuka Kav. 38,
Jakarta 13120 Indonesia