



ONE ASEAN ONE RESPONSE

WEEKLY DISASTER UPDATE

Week 18
29 April – 5 May 2024

- ahacentre.org
- ahacentre
- @ahacentre
- @ahacentre

The AHA Centre, GRAHA BNPB 13th floor, Jl. Raya Pramuka Kav. 38, East Jakarta 13120 Indonesia

SOURCES

ASEAN Disaster Monitoring & Response System (DMRS); ASEAN Specialised Meteorological Centre (ASMC); Joint Typhoon Warning Centre (JTWC);

Indonesia: BNPB, BMKG, PVMBG; Malaysia: JMM; Philippines: PHIVOLCS; Thailand: DDPM; Viet Nam: VDDMA;

Various news agencies.

DISCLAIMER

The AHA Centre was established in November 2011 by the Association of Southeast Asian Nations (ASEAN) Member States to facilitate cooperation and coordination among Member States, relevant agencies of the United Nations and international organisations in disaster management and emergency response.

This update consists of significant natural disaster events that occurred in ASEAN Member States – Brunei Darussalam, Cambodia, Indonesia, Lao PDR, Malaysia, Myanmar, Philippines, Singapore, Thailand, and Viet Nam. The disasters recorded include Drought, Flood, Earthquake, Tsunami, Volcano, Wind, Landslide, and Storm.

The use of boundaries, geographic names, related information, and potential considerations for response are for references, not warranted to be error-free or implying official endorsement from ASEAN Member States.

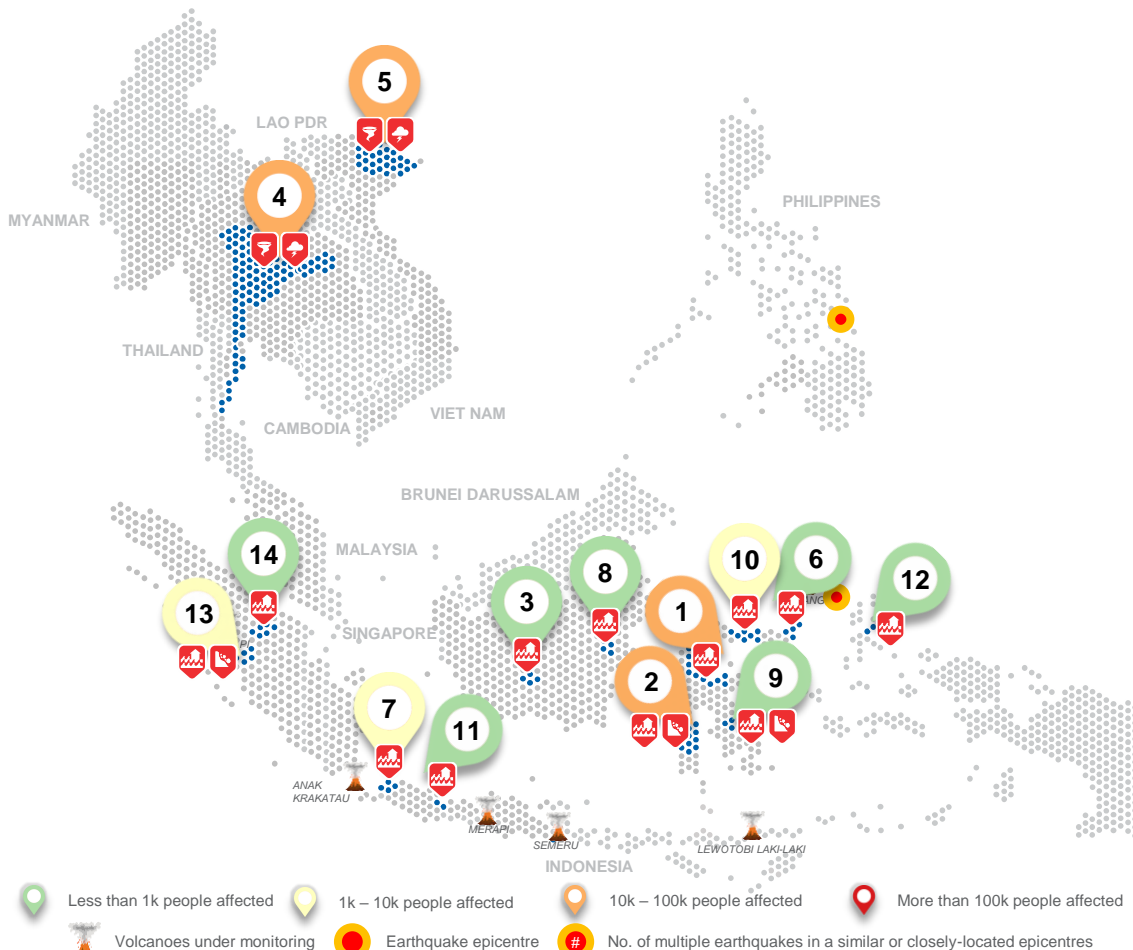
© 2024 AHA Centre. All rights reserved.

For inquiries, comments, and/or suggestions, you may reach us through dma@ahacentre.org



You are receiving this email because you are registered in our distribution list.

SCAN TO SUBSCRIBE



Less than 1k people affected
 1k – 10k people affected
 10k – 100k people affected
 More than 100k people affected
 Volcanoes under monitoring
 Earthquake epicentre
 No. of multiple earthquakes in a similar or closely-located epicentres

REGIONAL TALLY



Note: Estimations are based on data reported/confirmed by National Disaster Management Organisations of each respective ASEAN Member State and other verified sources

- 01 Indonesia, Flooding in Parigi Moutong, Tojo Una Una, and Palu City (Central Sulawesi)**
29 April, 3, 4 May 2024
- 02 Indonesia, Flooding and Landslides in Wajo (2), Sidenreng Rappang (2), Luwu, Enrekang, Pinrang, and Soppeng (South Sulawesi)**
29 April, 1, 3, 3, 3, 3, 3, 3 May 2024
- 03 Indonesia, Flood in Kotawaringin Timur (Central Kalimantan)**
29 April 2024
- 04 Thailand, Storms and Strong Winds in Northern, Northeastern, Central, and Southern Regions (2, 3, 4, 5, 6, 7, 8)**
29 April, 1, 1, 1, 2, 3, 3, 5 May 2024
- 05 Viet Nam, Storms and Strong Winds in 9 Provinces (Northeast and Northwest Regions)**
30 April 2024
- 06 Indonesia, Flooding in Minahasa (North Sulawesi)**
5 May 2024
- 07 Indonesia, Flooding in Serang (2) and Lebak (Banten)**
2, 2, 3, May 2024
- 08 Indonesia, Flooding in Penajam Paser Utara (East Kalimantan)**
3 May 2024
- 09 Indonesia, Flooding and Landslides in Konawe Utara (Southeast Sulawesi)**
3 May 2024
- 10 Indonesia, Flooding in Boalemo and Pohuwato (Gorontalo)**
3, 3 May 2024
- 11 Indonesia, Flooding in Tegal City (Central Java)**
3 May 2024
- 12 Indonesia, Flooding in Halmahera Timur (North Maluku)**
3 May 2024
- 13 Indonesia, Flooding and Landslides in Sawahlunto and Siniunjung (West Sumatra)**
3, 3 May 2024
- 14 Indonesia, Flooding in Kuantan Singingi (Riau)**
4 May 2024

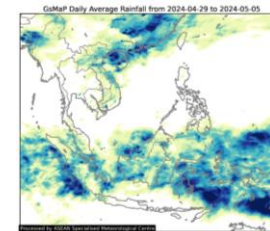
REGIONAL SUMMARY:

For the eighteen-week of 2024, the ASEAN region experienced 47 disasters, including floods, landslides, storms, and wind-related disasters. Indonesia, Thailand, and Viet Nam were reportedly affected by these disasters. According to the *Badan Nasional Penanggulangan Bencana (BNPB)* of Indonesia, floods and landslides occurred in Central Sulawesi, South Sulawesi, Central Kalimantan, North Sulawesi, Banten, East Kalimantan, Southeast Sulawesi, Gorontalo, Central Java, North Maluku, West Sumatra, and Riau. Meanwhile, the Department of Disaster Prevention and Mitigation (*DDPM*) in Thailand reported storms and wind-related incidents across several provinces in the Northern, Northeastern, Central, and Southern Regions. Lastly, the Viet Nam Disaster and the Dyke Management Authority (*VDDMA*) documented storms and winds in Lao Cai, Yen Bai, Ha Giang, Cao Bang, Bac Kan, Tuyen Quang, Phu Tho, Thai Nguyen and Quang Ninh provinces.

HIGHLIGHT:

In Week 18, the medium to high 7-day average rainfall resulted to flooding and landslides in Indonesia as reported by the *BNPB*. These reported disasters accounted for 64.41% of all disaster-affected persons in the region for this reporting period. *BNPB* reported flood and landslide impacts that caused 13 deaths, 2 injuries, 551 displacements, and affected a total of 14.8K families (56.5K persons). Most of these disasters were reported in Sulawesi where high average rainfall was also observed. A total of 12.4K houses were damaged, of which 261 were reported to be totally damaged. In addition, the flooding and landslides also damaged 40 schools, 14 health facilities, 5 government offices, 20 worship places, 7k hectares of rice, and 2.7K hectares of other crops as reported by *BNPB*. Meanwhile, storms and wind-related disasters resulted to 6.7K damaged houses in mainland Southeast Asia as reported by the *DDPM* in Thailand and the *VDDMA* in Viet Nam. Storms accompanied by strong winds had blown roofs off of people's houses and affected about 31.2K individuals in Thailand and Viet Nam. The *DDPM* also reported 1 death due to fallen tree in Buri Ram, Thailand. Meanwhile, 1 person died due to lightning strike in Viet Nam according to the *VDDMA*. Authorities had immediately provided emergency response measures and provided assistance to the affected population in Indonesia, Thailand, and Viet Nam.

HYDRO-METEO-CLIMATOLOGICAL:



For the past week, data from the ASEAN Specialised Meteorological Centre (*ASMC*) indicates a 7-day average rainfall ranging from medium to high across Brunei Darussalam, Indonesia (Sumatra, Banten, Kalimantan, Sulawesi, Maluku, and Papua), Lao PDR, Malaysia (Peninsular, Sabah, and Sarawak), northwest and central Myanmar, southern Philippines (Mindanao), parts of northern, northeastern, central, and south Thailand, and Viet Nam. High average rainfall is also observed over the vicinity of Papua where Tropical Disturbance INVEST 91P is currently being monitored (*BMKG, JTWC*).

GEOPHYSICAL:

Two (2) significant earthquakes (M≥5.0) were recorded by Indonesia's *BMKG*, the *Jabatan Meteorologi Malaysia (JMM)*, and the Philippine Institute of Volcanology and Seismology (*PHIVOLCS*). Ruang Volcano (alert level IV), Mount Semeru (alert level III) in Indonesia, and Mayon Volcano (alert level 1), Taal (alert level 1), Kanlaon (alert level 1), and Bulusan (alert level 1) in the Philippines reported recent volcanic activity according to *Pusat Vulkanologi dan Mitigasi Bencana Geologi (PVMBG)* and *PHIVOLCS*.

OUTLOOK:

According to the ASEAN Specialised Meteorological Centre (*ASMC*), drier conditions are predicted to persist over much of the northeastern Maritime Continent and ease elsewhere. Wetter conditions are predicted over much of the equatorial region. Warmer than usual temperature is predicted to persist over most of Southeast Asia. There is a small increase in chance of rainfall over parts of the equatorial region, in particular over central Sumatra, southern half of Borneo, parts of Sulawesi and the Maluku Islands. For the regional assessment of extremes, the increase in chance of extreme hot conditions persists for some parts of Southeast Asia, with moderate increase in chance over parts of Myanmar, western Thailand, northern Borneo and the Philippines, with small increase in chance over the western Maritime, rest of Thailand, Lao PDR, Cambodia, and Viet Nam. An El Niño is currently present, showing signs of weakening and predicted to transition to ENSO neutral conditions during April-May 2024. At the seasonal timescale during March to May, El Niño event typically bring warmer conditions to much of the ASEAN region and drier conditions to much of the northern ASEAN region.