



ONE ASEAN
ONE RESPONSE

SITUATION UPDATE

COMBINED EFFECTS OF THE SOUTHWEST MONSOON, TROPICAL CYCLONE GAEMI AND PRAPIROON PHILIPPINES

No. **2**

Tuesday, 30 July 2024, 1800 HRS (UTC+7)

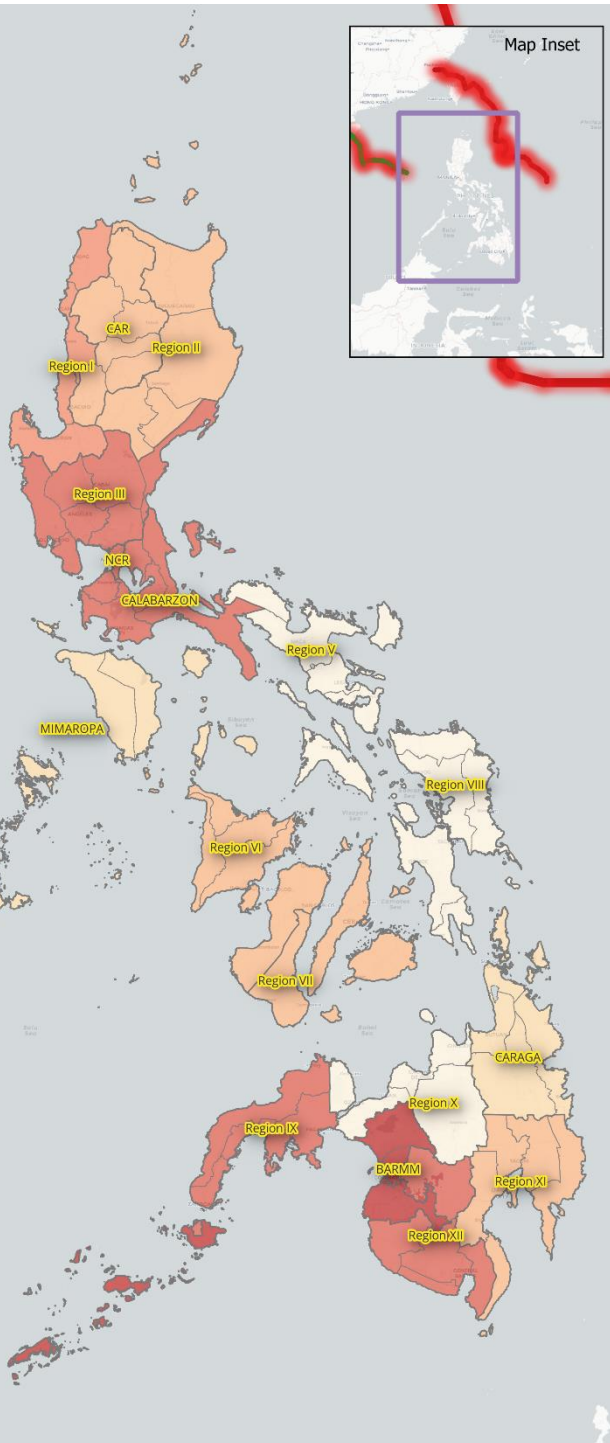
This Situation Update is provided by the AHA Centre for use of the ASEAN Member States and relevant stakeholders. The information presented is collected from various sources, including but not limited to ASEAN Member States' Government Agencies, UN, IFRC, NGOs, Humanitarian and Dialogue Partners, and News Organisations.

Combined Effects of Southwest Monsoon, TC PRAPIROON and TC GAEMI



Disclosure(s): Figures are the latest updates as of 30 July 2024 at 0700 HRS UTC+7

Region	# of Evacuation Centres	IDPs Inside Evacuation Centres	IDPs Outside Evacuation Centres	Total IDPs
Region 1	4	59	8,444	8,503
Region 2	1	5	170	175
Region 3	270	26,632	47,332	73,964
CALABARZON	67	15,532	5,978	21,510
MIMAROPA	-	-	25	25
Region 5	-	-	-	-
Region 6	22	754	51	805
Region 7	2	576	-	576
Region 8	-	-	-	-
Region 9	27	13,161	38	13,199
Region 10	-	-	-	-
Region 11	2	56	102	158
Region 12	8	15,690	24,165	39,855
CARAGA	1	16	8	24
BARMM	15	5,095	538,156	543,251
CAR	1	6	233	239
NCR	137	30,501	-	30,501
Total	557	108,083	624,702	732,785



Legend

Tropical Cyclone Track

- Tropical Cyclone GAEMI (Carina)
- Tropical Cyclone PRAPIROON (Butchoy)
- Province Boundary
- Region Boundary

Displaced Population, as of 30 July 2024 at 0700 HRS UTC+7

- As of 30 July, no IDPs reported
- Less than 100 IDPs
- 100 - 1,000 IDPs
- 1,000 - 10,000 IDPs
- 10,000 - 100,000 IDPs
- More than 100,000 IDPs

- 4.84M**
AFFECTED PERSONS
- 732.8K**
INTERNALLY DISPLACED PERSONS (108.1K inside ECs, 624.7K outside EC)
- 39**
DEAD (25 of which are still for validation)
- 9**
INJURED (7 for validation)
- 6**
MISSING (6 for validation)
- 2K**
HOUSES DAMAGED
- 82.1M USD**
WORTH OF DAMAGES
- 5.4M USD**
WORTH OF ASSISTANCE



Note: Information contained in this document are additional information since the AHA Centre Situation Update #1 (27 July 2024) and until today (30 July 2024 at 1800 HRS UTC+7). You may refer to [Situation Update #1](#) (27 July 2024) for the previous information

1. SUMMARY

UPDATED IMPACTS. As of 30 July 2024, around 4.8M people (1.3M families) have been affected by the combined effects of the Southwest Monsoon, Tropical Cyclone PRAPIROON (Butchoy), and Tropical Cyclone GAEMI (Carina). Region 3 accounts for approximately 63% of the total affected population (around 3 million people). Regarding displaced populations, as of the same date at 0700 HRS UTC+7, internally displaced individuals within evacuation centers are concentrated in the following areas NCR 28.22% (30.5K persons in 137 ECs), Region 3 24.64% (27K persons in 270 ECs), Region 12 14.52% (15.7K persons in 8 ECs), CALABARZON 14.37% (15.5K persons in 67 ECs), and Region 9 12.18% (13.2K persons in 27 ECs). Regarding flood conditions, Region 3 still has approximately 213 or 34% of reported flooding areas inundated (414 areas subsided), while other regions have mostly subsided or are receding. The estimated cost of damages, including houses, agriculture, livestock, poultry, fisheries, infrastructure, and other assets, stands at around 82.1M USD. Data collection and validation are ongoing by the relevant government agencies.

Preparedness and Response.

Alert Status. As of 30 July 2024, the Philippines' National Disaster Risk Reduction and Management Council (NDRRMC) remains on **RED ALERT** – Day 10 for the Combined Effects of the Southwest Monsoon, Tropical Cyclone PRAPIROON (Butchoy), and Tropical Cyclone GAEMI (Carina) in the Philippines. While the AHA Centre remains at the EOC alert level to **ORANGE** – Day 6.

Disaster Emergency Logistics System for ASEAN (DELSA). As of 30 July, a total of 7,328 personal hygiene kits were retrieved and mobilised by the NDRRMC for distribution to affected communities (dispatched on 26 July and 29 July). The AHA Centre remains committed to liaising with NDRRMC-OCD for the dispatch of the requested DELSA relief items and stands ready to provide further support as needed.

2. ASSESSMENT OF IMPACT AND HUMANITARIAN NEEDS

Impacts in the Philippines – CATASTROPHIC as of 30 July 2024 (based on DMA guidelines)

- a. Casualties and Affected Population
 - 1,317,111 families (4,839,002 persons) affected from Regions 1, 2, 3, CALABRZON, MIMAROPA, 5, 6, 7, 8, 9, 10, 11, 12, CARAGA, BARMM, CAR, and NCR
 - 732,785 currently internally displaced persons (27,112 families or 108,083 persons inside 557 evacuation centres; and 129,723 families or 624,702 persons outside evacuation centres)
 - 39 dead (25 of which are still for validation), 9 injured (7 of which are still for validation), and 6 missing (6 of which are still for validation)
- b. Damages
 - An estimated 82.1M USD worth of damages (houses, agriculture, livestock, poultry, fisheries, infrastructure, and other assets)
 - 2,005 houses damaged (1,779 partially, 226 totally)



c. Lifelines

- 362 road sections and 24 bridge sections affected, 54% of the total of both passable to all types of vehicles
- 1 of 1 (100%) affected airports already resumed operations
- 21 of the 22 (95%) affected seaports already resumed operations
- 89 of the 101 (88%) power-affected cities/municipalities restored
- 7 of the 8 (88%) water supply-affected cities/municipalities restored
- 11 of the 11 (100%) telecommunications-affected cities/municipalities restored

d. Related incidents

- 1,184 flooded areas, and 56 other related incidents (rain-induced landslides, collapsed structures, and others) were reported.
- As of reporting, a total of 229 areas remains inundated, primarily in Region 3 (213), 9 (9), 10 (1), BARMM (5), and CAR (1). In addition, 46 flooding areas are receding in CALABRZON (2), MIMAROPA (5), 7 (1), 9 (6), 12 (18), BARMM (5), and NCR (9).
- After the recent Sentinel Asia activations for northern and central-southern Luzon to assess the extent of the floods. Earth Observatory of Singapore-Remote Sensing Lab (EOS-RS) assessed widespread flooding in Cagayan during the 22 July event, as indicated by the blue pixels (Annex 1).

Anticipated Risks

a. **Tropical Cyclone Advisories**

According to [JTWC](#), as of 30 July 2024 at 1300 HRS UTC+7, there are no active tropical cyclone advisories for the ASEAN Region. However, the AHA Centre currently monitors the INVEST 90W over the West Pacific Ocean which is still under investigation for its potential to develop into a tropical cyclone (Annex 2). According to PAGASA, Tropical Cyclone-Threat potential is unlikely during the period of 29 July - 4 August (Annex 3).

b. **Southwest Monsoon**

According to PAGASA, the southwest monsoon may bring partly cloudy to cloudy skies with isolated to scattered rains and thunderstorms over Ilocos Region, Zambales, Metro Manila, the rest of Cordillera Administrative Region, Tarlac, Bataan, Pampanga, Bulacan, Rizal, Cavite, Batangas, and Occidental Mindoro.

c. **The El Niño-Southern Oscillation (ENSO)**

According to PAGASA, the ENSO monitoring system state is Neutral, however recent climate models combined with expert judgements suggest 70% chance of La Niña forming in August, September, October 2024 - La Niña Alert (Annex 4). This potential La Niña event could lead to wetter conditions in most of the ASEAN region.

Humanitarian Needs. Following the request from NDRRMC to the AHA Centre, several needs are identified as follows: family kits, hygiene kits, shelter repair kits, generators, water filtration unit, lighting equipment, water tank. In addition to these following needs, the needs for provision of foods and other basic necessary logistics are important in view of significant number of displaced populations. As of 30 July 2024, at 0700 HRS UTC+7, internally displaced individuals within evacuation centres are concentrated in the following areas NCR 28.22% (30.5K persons in 137 ECs), Region 3 24.64% (27K persons in 270



ECs), Region 12 14.52% (15.7K persons in 8 ECs), CALABARZON 14.37% (15.5K persons in 67 ECs), and Region 9 12.18% (13.2K persons in 27 ECs).

3. ACTIONS TAKEN AND RESOURCES MOBILISED

Response by the Government of the Philippines as of 30 July 2024

a. Operational

NDRRMC **RED ALERT** Day 10 for the Combined Effects of the Southwest Monsoon, Tropical Cyclone PRAPIROON, and Tropical Cyclone GAEMI in the Philippines.

Pre-emptive evacuation of 4,163 persons in Regions 1, MIMAROPA, 6, 9, 11, and CARAGA.

A total of 118 cities/municipalities were declared under State of Calamity over Region 1 (1), 3 (57), CALABARZON (37), MIMAROPA (3), 11 (1), 12 (2), and NCR (17)

b. Costs of Humanitarian Assistance

Around 5.4 M USD worth of assistance has been provided to those affected from OCD, DSWD, LGUs, NGO, and others.

c. Response Cluster EEIs

Food and Non-Food Items (F/NFI). 315,443 FNFI provided (297,090 of which are FFPs, 18,353 pcs hygiene kits, laminated sacks, kitchen kits, rice, and sleeping kits among others) were provided to affected families in Regions I, II, III, CALABARZON, MIMAROPA, 5, 6, NCR, and CAR.

Search Rescue and Retrieval (SRR). A total of 1,524 Search, Rescue, and Retrieval (SRR) personnel deployed to regions 1, 2, 3, CALABARZON, MIMAROPA, 5, 7, BARMM, and CAR.

Emergency Telecommunications. 2 emergency telecommunications resources deployed. 149 emergency telecommunications equipment/resources available and ready for deployment.

Law and Order. 1,789 personnel and 275 resources deployed in evacuated areas conducting visibility patrols in Regions 1, 3, 4A, and NCR.

Education. 425 schools used as evacuation centres in Regions 1, 3, CALABARZON, 6, NCR, and CAR.

Health. A total of 38.7K USD worth of health and WASH assistance provided to Regions 1, NCR, and CALABARZON; and 10.4M USD worth of medical logistics are available from DOH Central Office, and CHDs 1, 2, 3, 4a, 4b, 5, 6, 7, MMCHD, and MOH-BARMM.

Response by International Organisations and Partners as of 30 July 2024

- a. [The Chinese Embassy in Manila and the Philippine Chinese Chamber of Commerce and Industry Inc](#) donated around 59.9K USD worth of relief goods to families affected by the combined impact of southwest monsoon, PRAPIROON, and GAEMI.
- b. Earth Observatory Singapore – Remote Sensing Lab (EOS – RS) through Sentinel Asia OPTEMIS. EOS-RS as a data analysis node provided flood proxy maps through the Sentinel Asia Network.



Response by the AHA Centre as of 30 July 2024

- a. On Monday, 29 July, the AHA Centre in coordination with NDRRMC dispatched 2,000 Personal Hygiene Kits from DELSA Satellite Warehouse in Camp Aguinaldo, Quezon City, the Philippines for further distribution to the affected community by NDRRMC-OCD.



Figure 1. The loading process for the dispatch of 2,000 Personal Hygiene Kits from DELSA Satellite Warehouse in Camp Aguinaldo, Quezon City, the Philippines on 29 July 2024

- b. As of 30 July, a total of 7,328 personal hygiene kits were retrieved and mobilised by the NDRRMC for distribution to affected communities (dispatched on 26 July and 29 July).
- c. The AHA Centre remains committed to liaising with NDRRMC-OCD for the dispatch of the requested DELSA relief items and stands ready to provide further support as needed.

4. RECOMMENDATIONS AND PLAN OF ACTIONS

Recommendations

- a. General public and humanitarian partners are advised to monitor information on the hazards and disaster impacts from official government sources. Particularly on the current situation which shows that several areas remain inundated in the following regions: Region 3 (213), 9 (9), 10 (1), BARMM (5), and CAR (1). Additionally, the southwest monsoon also affects the western sections of Northern and Central Luzon.
- b. Information on the impacts and current situations from the official government sources can be accessed through the Philippines's National Disaster Risk Reduction and Management Council (NDRRMC) website at <https://ndrrmc.gov.ph/>.
- c. Information on the early warning of the weather and climate conditions from official government sources can be accessed through the Philippine Atmospheric, Geophysical and Astronomical Services Administration (PAGASA) website at <https://bagong.pagasa.dost.gov.ph/>.



The AHA Centre's Plan

- a. AHA Centre will continue to liaise with NDRRMC-OCD for the dispatch of the requested DELSA relief items from the DELSA Satellite warehouse in Quezon City, Philippines.
- b. The AHA Centre will continue to closely coordinate with NDRRMC and stands ready to provide support should other need arises.
- c. The AHA Centre will continuously update the impact information in the ASEAN Disaster Information Network (ADINet) on the Combined Effects of the Southwest Monsoon, Tropical Cyclone GAEMI, and PRAPIROON in the Philippines with the following identification numbers AHADID: AHA-FL-2024-001108-PHL.



Prepared by:

The AHA Centre - Emergency Operations Centre (EOC)

ABOUT THE AHA CENTRE

The AHA Centre - ASEAN Coordinating Centre for Humanitarian Assistance on disaster management - is an inter-governmental organisation established by 10 ASEAN Member States – Brunei Darussalam, Cambodia, Indonesia, Lao PDR, Malaysia, Myanmar, Philippines, Singapore, Thailand and Viet Nam - to facilitate the cooperation and coordination among ASEAN Member States and with the United Nations and international organisations for disaster management and emergency response in the region.

The ASEAN Coordinating Centre for Humanitarian Assistance on disaster management (AHA Centre), Graha BNPB 13th Floor, JL Raya Pramuka Kav 38, East Jakarta, 13210, Indonesia
Phone: +62-21-210-12278 | www.ahacentre.org | email: info@ahacentre.org

Contact:

- 1) Agustina Tnunay, Assistant Director for Preparedness and Response,
agustina.tnunay@ahacentre.org
- 2) Sadhu Zukhruf Janottama, Disaster Monitoring & Analysis Officer,
sadhu.janottama@ahacentre.org



Annex 1. Flood Proxy Map from EOS-RS



EOS-RS Flood Proxy Map:
Philippines, Floods,
22 Jul 2024, v0.9

The Earth Observatory of Singapore - Remote Sensing Lab (EOS-RS) created this preliminary Flood Proxy Map (FPM) depicting areas that are likely flooded in Cagayan, Philippines due to heavy rainfall from Typhoon Carina (Gaemi). This map was derived from synthetic aperture radar (SAR) images acquired by the Copernicus Sentinel-1 satellite operated by the European Space Agency (ESA) before (01 Nov 2023 to 10 Jul 2024) and during (22 Jul 2024) the event.

The map covers an area indicated by the white polygon. The preliminary map shows areas which are likely flooded (shown by light blue pixels) of approximately 30m in size) in Cagayan, Philippines due to heavy rainfall from Typhoon Carina (Gaemi). Preliminary validation was conducted using news reports, images, and videos of flooding in selected areas. This map should be used as a guide to identify areas that are likely flooded, and may be less reliable over urban and vegetated areas.

This product contains modified Copernicus Sentinel data (2023, 2024), processed by ESA and analyzed by the Earth Observatory of Singapore - Remote Sensing Lab (EOS-RS).

More map details and files at:
https://eos-rs-products.earthobservatory.sg/EOS-RS_202407_Philippines_Floods

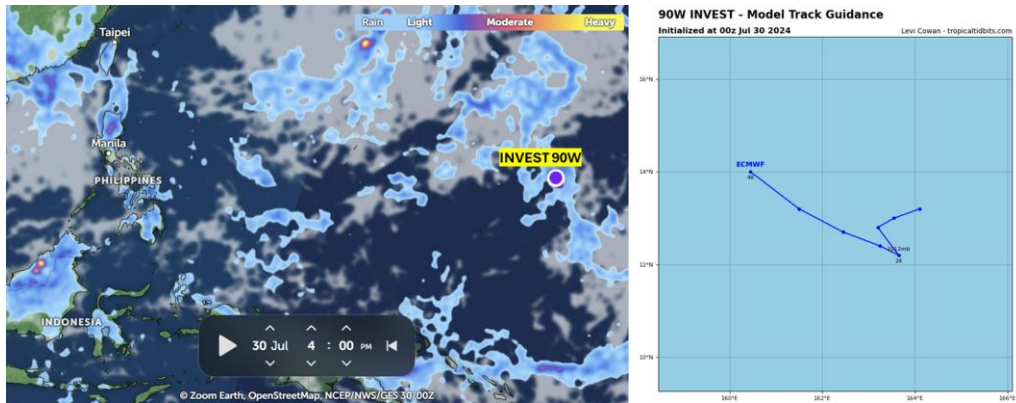
Legal Disclaimer:
<https://products.earthobservatory.sg/#faq>

Credits: Earth Observatory of Singapore - Remote Sensing Lab (EOS-RS)
Contains modified Copernicus Sentinel data (2023, 2024)

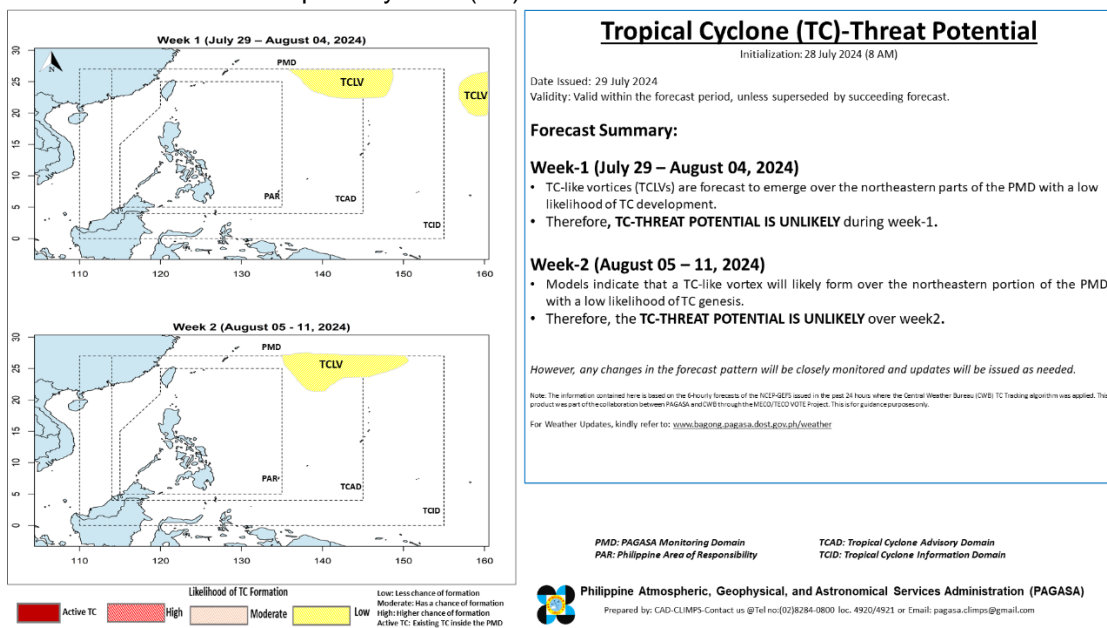
EOS-RS Twitter:
@eos_rs



Annex 2. PAGASA ENSO Alert Monitoring Status accessed on 30 July 2024 at 1530 HRS UTC+7



Annex 3. Tropical Cyclone (TC)-Threat Potential Forecast – PAGASA



Annex 4. PAGASA ENSO Alert Monitoring Status accessed on 30 July 2024 at 1530 HRS UTC+7

