

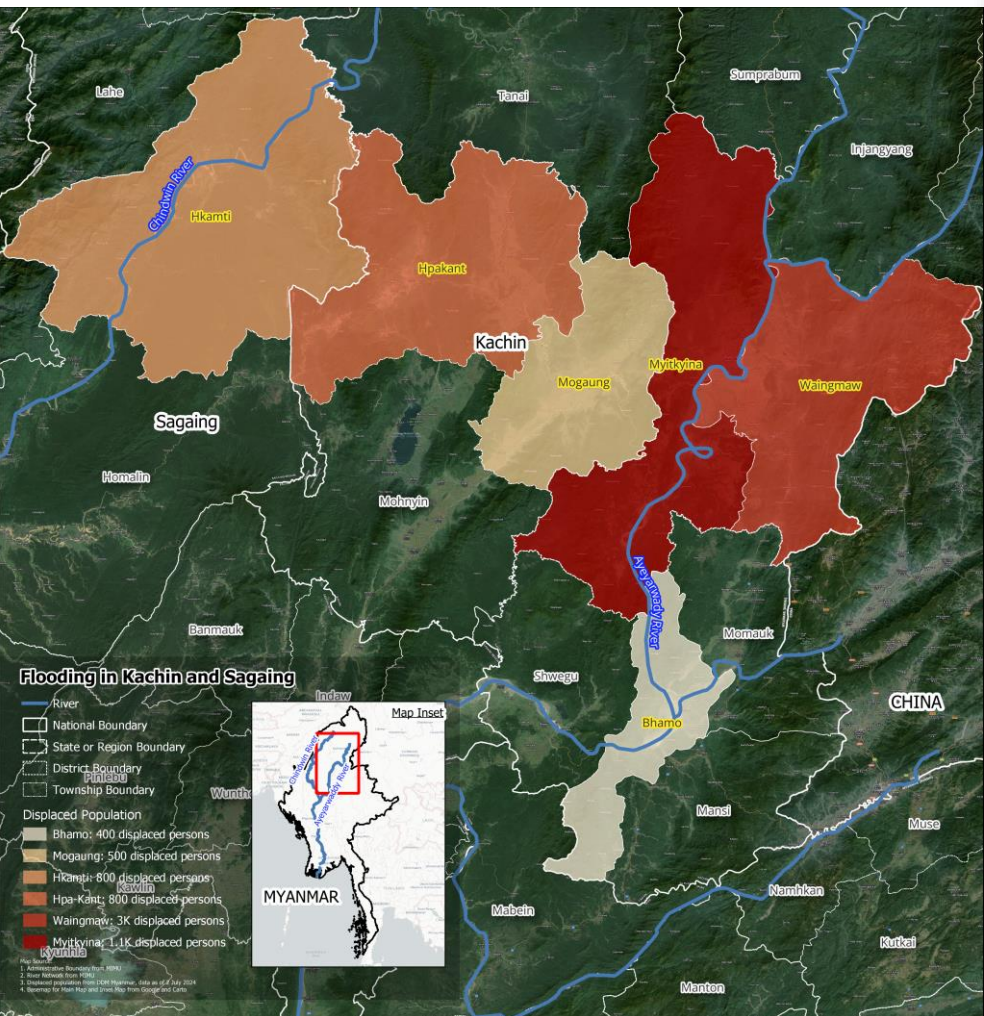
THURSDAY

04 JUL 2024  
1700 HRS UTC +7

# FLOODING IN KACHIN AND SAGAING MYANMAR FLASH UPDATE #1



ONE ASEAN ONE RESPONSE



## KEY FIGURES

Disclosure(s): The values shown are based on data reported/verified by National Disaster Management Organisations of the respective ASEAN Member State (Department of Disaster Management (DDM) Myanmar), the ASEAN DMRS, and other verified sources.



- OVERVIEW:** As the effects of monsoon season in Northern Myanmar, prolonged heavy rainfall since the last week of June in the upstream region of the Ayeyarwaddy River, the water level in Myitkyina has rapidly increased and reached above danger level. This resulted to overflow of the river that flooded the communities in the low-lying areas of Myitkyina, Waingmaw, and Mogaung, as well as flooding in Hpa-Kant and Bhamo. Another major river named Chindwin River has also overflowed and has consequently flooded the communities in Hkamti located near Chindwin River.
- IMPACTS:** According to [DDM](#) Myanmar, a total of 3.7K families (17.9K individuals) over Kachin and Sagaing have been displaced into 53 evacuation centres such as schools, monasteries, churches and other community shelters, with following details:
  - Myitkyina: 2.3K families (11K individuals) evacuated to 36 evacuation centres
  - Waingaw: 740 families (3K individuals) evacuated to 14 evacuation centres
  - Bhamo: 100 families (400 individuals) evacuated to temporary shelters
  - Mogaung: 90 families (500 individuals) evacuated to temporary shelters
  - Hpa-Kant: 265 families (2.2K individuals) evacuated to temporary shelters
  - Hkamti: 170 families (800 individuals) evacuated to 3 evacuation centres
 Latest Situation: Although the observation stations in Myitkyina continue to indicate a high danger level as of today (4 July), the river water level has been gradually decreasing since yesterday (3 July). Consequently, some of the evacuated communities are now returning to their homes.
- WEATHER AND FLOOD FORECAST:**
  - According to [DMH](#) Myanmar's forecast for 1-10 July 2024, rain or thundershowers are expected to be above normal in Sagaing, Mandalay, Magway, Kachin, Shan, Chin, and Kayah. Additionally, rainy days are anticipated for 7 to 10 days in Upper Sagaing, Bago, Yangon, Ayeyarwady, Taninthayi, Kachin, Shan, Chin, Rakhine, Kayin, and Mon
  - [WFP ADAM](#) Flood Forecast indicates the following cities/municipalities with potential flooding for the period of 1-8 July 2024:
    - High potential:** Naga
    - Moderate potential:** Monywa, Yinmarbin, Mawlaik, Hkamti, Myitkyina
    - Low potential:** Pyay, Magway, Minbu, Thayet
- PREPAREDNESS AND RESPONSE:**
  - The Kachin State Government has led the response measures to provide necessary humanitarian assistance and to evacuate affected communities with the guidance of the National Level Authorities.
  - As data collection and provision of assistance are underway, the total number of affected people can be increased in the next few days.
  - [DDM](#) offices in the affected area are now taking necessary actions to provide assistance under the close supervision of [DDM](#) Headquarters.
  - [DDM](#) EOC is also closely monitoring the weather situation.
- The AHA Centre will continue to monitor for further developments and issue necessary updates.

**DATA SOURCES**  
ASEAN Disaster Monitoring & Response System (DMRS), ASEAN Disaster Information Network (ADINet); Pacific Disaster Center (PDC Global); ASEAN Specialised Meteorological Centre (ASMC); World Food Programme Advanced Disaster Analysis and Mapping (WFP-ADAM); Myanmar: DDM, DMH  
Verified news media agencies

**DISCLAIMER**  
The AHA Centre was established in November 2011 by the Association of Southeast Asian Nations (ASEAN) Member States to facilitate cooperation and coordination among the Member States, relevant agencies of the United Nations, and international organisations in disaster management and humanitarian assistance.  
The use of boundaries, geographic names, related information and potential considerations for response are for reference, not warranted to be error free or implying official endorsement from ASEAN Member States.

© 2024 AHA Centre.  
All rights reserved.  
You are receiving this email because you are registered in our distribution list.

Our mailing address is:  
AHA Centre,  
GRAHA BNPB 13<sup>th</sup> Floor,  
Jl. Raya Pramuka Kav. 38,  
Jakarta 13120 Indonesia