

MONDAY
4 NOV 2024
1830 HRS UTC +7

LEWOTOBI LAKI-LAKI VOLCANO ERUPTION INDONESIA FLASH UPDATE #1

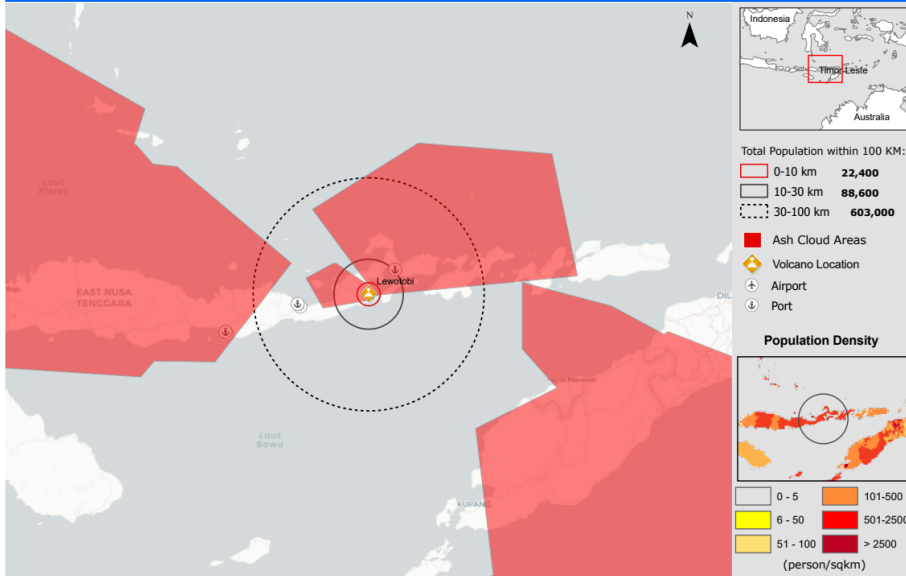


ONE ASEAN ONE RESPONSE

Volcano Warning - Lewotobi Volcano, Indonesia 04 November 2024 0400 UTC



VAAC (DARWIN) ASH ADVISORY SUMMARY: DISCRETE VOLCANO ASH TO FL400, FL350 AND FL280. VOLCANO ASH IDENTIFIABLE ON SATELLITE IMG. DISCRETE VOLCANO ASH SFC/FL280 MOV W, SFC/350 MOV NE AND SFC/FL400 MOV ESE. CVGHM REPORTING



KEY FIGURES



10.3K

AFFECTED PERSONS



10

DEAD PERSONS



3

EVACUATION CENTRES

- **OVERVIEW:** According to the *Pusat Vulkanologi dan Mitigasi Bencana Geologi (PVMBG)*, Mount Lewotobi Laki-laki erupted on Sunday, 3 November at 2257 HRS UTC+7. The height of the eruption column was not observed. The eruption was recorded on a seismograph with a maximum amplitude of 47.3 mm and a duration of 1,450 seconds. Based on both visual and instrumental observations, there has been a significant increase in volcanic activity. Consequently, [PVMBG](#) has elevated the alert status of Mount Lewotobi Laki-laki to [Alert Level IV](#) on 3 November at 2300 HRS UTC+7. Flores Timur Government has declared an Emergency Response Status starting from 3 November until 31 December 2024.
- **PRELIMINARY ANALYSIS:** According to the [ASEAN DMRS](#), it is estimated that 72.2K people (18.7K households), and 162 Million USD of infrastructure (total replacement value)* are within 10 km and more likely to be adversely impacted.
- **IMPACTS:** as of [BNPB](#) report on 4 November at 1019 HRS UTC+7 (data collection are ongoing);
 1. Affected areas: Kecamatan Wulanggitang and Kecamatan Ile Bura;
 2. A total of **10,295 persons affected**;
 3. A total of **10 persons dead**.
- **RESPONSE:**
 1. BPBD Flores Timur with other relevant agencies are conducting evacuations, rapid assessments, and search and rescue operations for affected population.
 2. BPBD Flores Timur in coordination with relevant agencies has established 3 evacuation centres in Konga Village, Lewolaga Village, and Tietehena Village.
 3. BPBD Flores Timur has prepared mobile kitchens and distributed mineral water, folding mattresses, blankets, and first aid kits.
 4. Residents around Mount Lewotobi Laki-laki and visitors/tourists are advised not to engage in any activities within a 7 km radius of the eruption center of Mount Lewotobi Laki-laki.
 5. Residents around Mount Lewotobi Laki-laki should be aware of the potential for lahar floods in rivers originating from the peak of Mount Lewotobi Laki-laki during heavy rainfall, especially in the areas of Dulipali, Padang Pasir, and Nobo.
 6. [BNPB](#) EOC is closely monitoring the situation and coordinating with BPBD. [BNPB](#) teams are also on their way to Flores Timur Regency to support the emergency response operations on the ground.
- The AHA Centre will continue to monitor for further developments and issue necessary updates.



Sources: BPBD Flores Timur
through BNPB Indonesia

DATA SOURCES

ASEAN Disaster Monitoring & Response System (DMRS); Pacific Disaster Center (PDC) Global;

Indonesia: BNPB, PVMBG

Verified news media agencies

DISCLAIMER

The AHA Centre was established in November 2011 by the Association of Southeast Asian Nations (ASEAN) Member States to facilitate cooperation and coordination among the Member States, relevant agencies of the United Nations, and international organisations in disaster management and humanitarian assistance.

The use of boundaries, geographic names, related information and potential considerations for response are for reference, not warranted to be error free or implying official endorsement from ASEAN Member States.

© 2024 AHA Centre.

All rights reserved.

You are receiving this email because you are registered in our distribution list.

Our mailing address is:

AHA Centre,
GRAHA BNPB 13th Floor,
Jl. Raya Pramuka Kav. 38,
Jakarta 13120 Indonesia