



ANNIVERSARY

WEEKLY DISASTER UPDATE

Week 49
2 – 8 December 2024

- ahacentre.org
- ahacentre
- @ahacentre
- @ahacentre

The AHA Centre, GRAHA BNPB 13th floor,
Jl. Raya Pramuka Kav. 38, East Jakarta 13120 Indonesia

SOURCES

ASEAN Disaster Monitoring & Response System (DMRS);
ASEAN Specialised Meteorological Centre (ASMC); Joint
Typhoon Warning Centre (JTWC);

Indonesia: BNPB, BMKG, PVMBG;
Malaysia: NADMA;
Philippines: NDRRMC, PHIVOLCS;
Thailand: DDPM;

Various news agencies.

DISCLAIMER

The AHA Centre was established in November 2011 by the
Association of Southeast Asian Nations (ASEAN) Member
States to facilitate cooperation and coordination among
Member States, relevant agencies of the United Nations
and international organisations in disaster management and
emergency response.

This update consists of significant natural disaster events
that occurred in ASEAN Member States – Brunei
Darussalam, Cambodia, Indonesia, Lao PDR, Malaysia,
Myanmar, Philippines, Singapore, Thailand, and Viet Nam.
The disasters recorded include Drought, Flood, Earthquake,
Tsunami, Volcano, Wind, Landslide, and Storm.

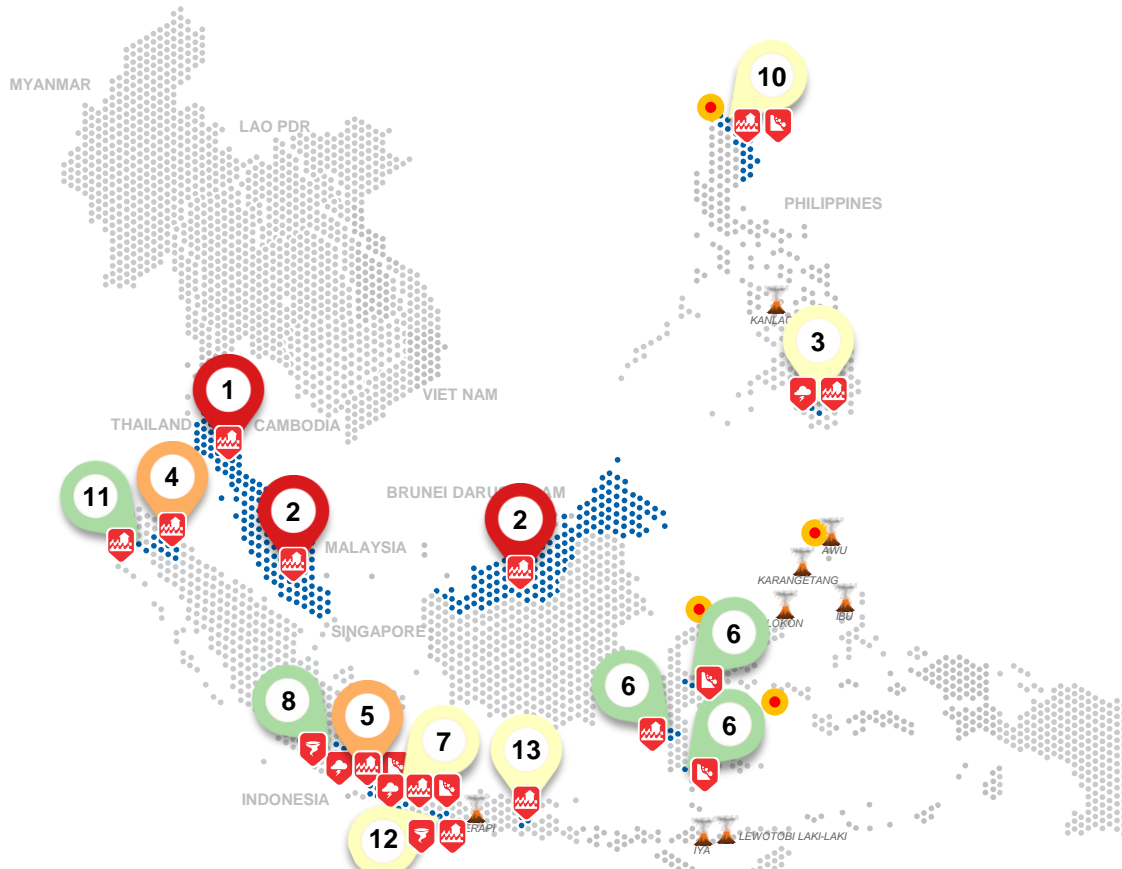
The use of boundaries, geographic names, related
information, and potential considerations for response are
for references, not warranted to be error-free or implying
official endorsement from ASEAN Member States.

© 2024 AHA Centre.
All rights reserved.

For inquiries, comments, and/or suggestions,
you may reach us through dma@ahacentre.org



SCAN TO SUBSCRIBE



- Less than 1k people affected
- 1k – 10k people affected
- 10k – 100k people affected
- More than 100k people affected
- Volcanoes under monitoring
- Earthquake epicentre
- No. of multiple earthquakes in a similar or closely-located epicentres

REGIONAL TALLY



Note: Estimations are based on data reported/confirmed by National Disaster Management Organisations of each respective ASEAN Member State and other verified sources

- 01 Thailand, Flooding in the [Southern Region](#) from Week 48**
25 Nov 2024
- 02 Malaysia, Flooding in [Peninsular, Sabah, and Sarawak](#) from Week 48**
26 Nov 2024
- 03 Philippines, Storms and Flooding in [South Cotabato](#) (Region XII)**
2 Dec 2024
- 04 Indonesia, Flooding in [Langkat, Medan, Serdang Bedagai, and Binjai](#) (North Sumatra)**
2, 3, 4 Dec 2024
- 05 Indonesia, Flooding, Landslides, and Storms in [Lebak, Pandeglang](#) (2), and [Serang](#) (Banten)**
2, 3, 4 Dec 2024
- 06 Indonesia, Flooding in [Pinrang](#) and Abrasion in [Bulukumba](#) (South Sulawesi)**
3, 6 Dec 2024
- 07 Indonesia, Flooding, Landslides, and Strong Winds in [Cianjur](#) and [Sukabumi](#) (West Java)**
3, 4 Dec 2024
- 08 Indonesia, Strong Winds in [Lampung Timur](#) (Lampung)**
4 Dec 2024
- 09 Indonesia, Flooding in [Poso](#) (Central Sulawesi)**
4 Dec 2024
- 10 Philippines, Flooding and Landslides in [Region II](#)**
4 Dec 2024
- 11 Indonesia, Flooding in [Aceh Selatan](#) (Aceh)**
4 Dec 2024
- 12 Indonesia, [Flooding](#) (2) and [Strong Winds](#) in [Cilacap](#) (Central Java)**
6, 6, 7 Dec 2024
- 13 Indonesia, Flooding in [Pasuruan City](#) (East Java)**
6 Dec 2024

REGIONAL SUMMARY:

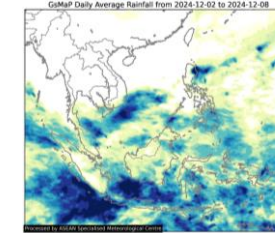
For the forty-ninth week of 2024, the ASEAN region experience 27 significant disasters, including floods, landslides, storms, and wind-related events. Indonesia, Malaysia, the Philippines, and Thailand were affected by these disasters. The *Badan Nasional Penanggulangan Bencana* ([BNPB](#)) of Indonesia reported flooding, storms, landslides, and wind-related events in Aceh, Banten, West Java, Central Java, East Java, Lampung, South Sulawesi, Central Sulawesi, and North Sumatra. In the Philippines, the National Disaster Risk Reduction and Management Council ([NDRRMC](#)) reported flooding, storms, and landslides in Region II and XIII. Additionally, monsoonal flooding that began in Week 48 continued to affect Malaysia and Thailand. In Malaysia, the *Agensi Pengurusan Bencana Negara* ([NADMA](#)) reported ongoing displacement of populations in Perak, Johor, Kelantan, and Melaka. Meanwhile, in Thailand, the Department of Disaster Prevention and Mitigation ([DDPM](#)) reported persistent flooding in Nakhon Si Thammarat and Songkhla.

HIGHLIGHT:

Monsoon rains have caused widespread flooding in Malaysia and Southern Thailand since week 48, as reported by [NADMA](#) and [DDPM](#). In Malaysia, as of 9 Dec at 1500 HRS UTC+7, [NADMA](#) reported that the flooding continues to displace 80 families (264 persons) across nine evacuation centres in Perak, Johor, Kelantan, and Melaka. In Thailand, [DDPM](#) reported that the flooding persists in Nakhon Si Thammarat and Songkhla, affecting 25,086 families. Tragically, [NADMA](#) has reported 10 fatalities in Malaysia, while [DDPM](#) has reported 31 fatalities in Thailand due to these disasters.

Meanwhile, in Indonesia, prolonged heavy rainfall and river overflow have caused flooding, landslides, and storms in Banten and West Java Provinces, according to [BNPB](#). These disasters have resulted in the loss of 20 lives, with 2 people missing, 5 injured, 19K families (65K persons) affected, and 6.6K persons displaced in Serang, Pandeglang, and Lebak in Banten, as well as Sukabumi and Lebak in West Java. Reports indicate damage to 9.6K houses, 38 bridges, 67 roads, 14 schools, 17 public facilities, 16 places of worship, and approximately 66K ha of agricultural areas. Relevant agencies are actively responding and continue to monitor and assess the situation

HYDRO-METEO-CLIMATOLOGICAL:



For the past week, data from the ASEAN Specialised Meteorological Centre ([ASMC](#)) has indicated a 7-day average rainfall ranging from medium to high across Brunei Darussalam, most of Indonesia, Malaysia, the Philippines, and Southern Thailand. As of this report, INVEST 91S, located approximately 1,060 km southwest of Jakarta, Indonesia, has the potential to bring heavy rainfall and strong winds to southern parts of Sumatra and Java. Additionally, INVEST 93S and 94S, situated around southern Nusa Tenggara and Southern Maluku, are also being monitored. These tropical disturbances may lead to heavy rainfall and strong winds extending to eastern parts of Java, including Bali, Nusa Tenggara, and the Maluku Islands ([BMKG](#), [JTWC](#)).

GEOPHYSICAL:

Four (4) significant earthquakes (M≥5.0) were recorded by *Indonesia's Badan Meteorologi, Klimatologi, dan Geofisika* ([BMKG](#)), and the Philippine Institute of Volcanology and Seismology ([PHIVOLCS](#)). Following recent eruption of Kanlaon Volcano on 9 Dec at 1403 HRS UTC+7, PHIVOLCS has raised the alert level of Kanlaon Volcano from Alert Level 2 (Increasing Unrest) to Alert Level 3 (Magmatic Unrest). Additionally, Mount Semeru (alert level II), Lewotobi Laki-laki (alert level IV), and Ibu (alert level III) in Indonesia, and Mayon Volcano (alert level 1) and Taal (alert level 1) in the Philippines reported recent volcanic activity according to *Pusat Vulkanologi dan Mitigasi Bencana Geologi* ([PVMBG](#)) and [PHIVOLCS](#).

OUTLOOK:

According to the ASEAN Specialised Meteorological Centre ([ASMC](#)), for the coming week, wetter conditions are predicted over southeastern Mainland Southeast Asia, parts of the northwestern and central Maritime Continent, and over parts of the southern Maritime Continent; and warmer than usual temperature is predicted over the much of the equatorial region. For the regional assessment of extremes, there is a small increase in chance over Southeastern Mainland Southeast Asia, northwestern Borneo, southern Maritime Continent and a moderate increase in chance over Malay Peninsula for very heavy rainfall event to occur; and there is a moderate increase in chance for extreme hot conditions to occur over Much of the equatorial region. Signs of La Niña conditions, with either ENSO neutral or short-lived La Niña conditions during December 2024 – March 2025.