



ONE ASEAN  
ONE RESPONSE

# WEEKLY DISASTER UPDATE

Week 12  
17 – 23 March 2025

- ahacentre.org
- ahacentre
- @ahacentre
- @ahacentre

The AHA Centre, GRAHA BNPB 13th floor,  
Jl. Raya Pramuka Kav. 38, East Jakarta 13120 Indonesia

### SOURCES

ASEAN Disaster Monitoring & Response System (DMRS);  
ASEAN Specialised Meteorological Centre (ASMC); Joint  
Typhoon Warning Centre (JTWC);

Indonesia: BNPB, BMKG, PVMBG;  
Malaysia: NADMA;  
Philippines: NDRRMC, DSWD, PHIVOLCS;

Various news agencies.

### DISCLAIMER

The AHA Centre was established in November 2011 by the  
Association of Southeast Asian Nations (ASEAN) Member  
States to facilitate cooperation and coordination among  
Member States, relevant agencies of the United Nations  
and international organisations in disaster management and  
emergency response.

This update consists of significant natural disaster events  
that occurred in ASEAN Member States – Brunei  
Darussalam, Cambodia, Indonesia, Lao PDR, Malaysia,  
Myanmar, Philippines, Singapore, Thailand, and Viet Nam.  
The disasters recorded include Drought, Flood, Earthquake,  
Tsunami, Volcano, Wind, Landslide, and Storm.

The use of boundaries, geographic names, related  
information, and potential considerations for response are  
for references, not warranted to be error-free or implying  
official endorsement from ASEAN Member States.

© 2025 AHA Centre.  
All rights reserved.

For inquiries, comments, and/or suggestions,  
you may reach us through [dma@ahacentre.org](mailto:dma@ahacentre.org)



You are receiving this email because you are  
registered in our distribution list.

SCAN TO SUBSCRIBE



## REGIONAL TALLY



Note: Estimations are based on data reported/confirmed by National  
Disaster Management Organisations of each respective ASEAN  
Member State and other verified sources

- 01 Indonesia, Flooding and Landslides in [Minahasa](#), [Minahasa Utara](#), [Bolaang Mongondow Utara](#), [Manado \(2\)](#), and [Bolaang Mongondow](#) (North Sulawesi)**  
17, 21, 21, 21, 21, 21 March 2025
- 02 Indonesia, Flooding in [Labuhanbatu Selatan](#) (North Sumatra)**  
17, March 2025
- 03 Indonesia, Flooding in [Teгал City](#), [Rembang](#), and [Jepara](#) (Central Java)**  
18, 22, 22 March 2025
- 04 Indonesia, Flooding in [Sintang](#) and [Kapus Hulu](#) (West Kalimantan)**  
18, 20 March 2025
- 05 Indonesia, Flooding in [Belu](#) (East Nusa Tenggara)**  
18 Mar 2025
- 06 Indonesia, Flooding in [Lampung Selatan](#) (Lampung)**  
18 Mar 2025
- 07 Philippines, Floods and Landslides in [Eastern Visayas](#) (Effects of Shear Line)**  
19 Mar 2025
- 08 Malaysia, Flooding in [Johor](#), [Sabah](#), and [Sarawak](#)**  
19 Mar 2025
- 09 Indonesia, Flooding in [Morowali Utara](#) and [Donggala](#) (Central Sulawesi)**  
20, 21 March 2025
- 10 Indonesia, Tornadoes and Storm in [Lombok Tengah \(2\)](#) (West Nusa Tenggara)**  
20, 22 March 2025
- 11 Indonesia, Strong Winds in [Lumajang](#), [Madiun](#), [Kediri](#), [Jombang](#), [Tulungagung](#), and [Malang](#) (East Java)**  
20, 22 March 2025
- 12 Indonesia, Landslides and Tornadoes in [Bogor](#) and [Subang](#) (West Java)**  
21, 22 Mar 2025
- 13. Others: Indonesia – [Halmahera Utara](#) (21 Mar), [Halmahera Barat](#) (21 Mar), [Halmahera Selatan](#) (22 Mar), [Luwu](#) (21 Mar), [Bangka Barat](#) (22 Mar), [Seram Bagian Barat](#) (22 Mar), [Penajam Paser Utara](#) (22 Mar); Philippines – [Northern Mindanao](#) (21 Mar)**

## REGIONAL SUMMARY:

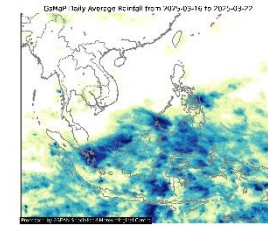
In the twelfth week of 2025, the ASEAN region faced a series of 32 disasters, including floods, landslides, storms, and wind-related incidents that affected Indonesia, Malaysia, and the Philippines. According to Indonesia's *Badan Nasional Penanggulangan Bencana* (BNPB), significant impacts were reported in North Sulawesi, North Sumatra, Central Java, West Kalimantan, East Nusa Tenggara, Lampung, Central Sulawesi, West Nusa Tenggara, East Java, West Java, North Maluku, South Sulawesi, Bangka Belitung, Maluku, and East Kalimantan. In Malaysia, *Agensi Pengurusan Bencana Negara* (NADMA) reported flooding in Johor, Sabah, and Sarawak. Lastly, in the Philippines, the National Disaster Risk Reduction and Management Council (NDRRMC) and Department of Social Welfare and Development (DSWD) reported flooding and landslides in Eastern Visayas and Northern Mindanao.

## HIGHLIGHT:

In the Philippines, severe weather systems have brought persistent, heavy rainfall that resulted to flooding and landslides in several regions. In Eastern Visayas, the Shear Line brought continuous heavy rainfall which caused landslide and flooding incidents that resulted to impassable roads and damaged houses. These incidents affected a total of 174.2K people (49.3K families) in 257 barangays in Eastern Samar, Leyte, Tacloban City, Northern Samar, and Samar. The number of displaced population reached a total of 7.5K people, of which 1.6K were served in at most 27 evacuation centres. Based on the report of the DSWD as of 23 March at 1700 HRS UTC+7, about 1K people remained displaced, of which 263 were being served in eight evacuation centres.

Authorities have immediately mobilized assistance to the affected families while continuously monitoring the situation and conducting assessments in the affected areas.

## HYDRO-METEO-CLIMATOLOGICAL:



For the past week, data from the ASEAN Specialised Meteorological Centre (ASMC) indicated medium to high 7-day average rainfall across the Maritime Continent, which includes Brunei Darussalam, Indonesia, and Malaysia, central and southern Philippines, and Singapore. As of this report, a tropical disturbance (INVEST 92S), located approximately 625 km southwest of Denpasar, Indonesia, is being closely monitored and assessed for its potential development into a tropical cyclone (JTWC).

## GEOPHYSICAL:

Nine (9) significant earthquakes (M≥5.0) were recorded by Indonesia's *Badan Meteorologi, Klimatologi, dan Geofisika* (BMKG) and the Philippine Institute of Volcanology and Seismology (PHIVOLCS): Mount Ibu (alert level III), Dukono (alert level II), Lewotobi Laki-laki (alert level IV), Ili Lewotolok (alert level II), Semeru (alert level II), and Marapi (alert level II) in Indonesia, and Kanlaon (alert level 3), Taal (alert level 1), and Mayon (alert level 1) volcanoes in the Philippines reported recent volcanic activity according to *Pusat Vulkanologi dan Mitigasi Bencana Geologi* (PVMBG) and PHIVOLCS.

## OUTLOOK:

According to the ASEAN Specialised Meteorological Centre (ASMC), for the coming week, wetter conditions are predicted over much of the Maritime Continent. Meanwhile, warmer conditions are predicted over parts of the eastern equatorial region. For the regional assessment of extremes, there is a moderate increase of extreme warm conditions over southern Myanmar. There is also a small increase in chance of extreme warm conditions over western and southern Borneo, Sulawesi, Maluku Islands and Papua. La Niña conditions are now present. La Niña conditions tend to bring wetter than average conditions to much of the ASEAN region during the intermonsoon period.