



ONE ASEAN  
ONE RESPONSE

# WEEKLY DISASTER UPDATE

Week 13  
24 – 30 March 2025

- ahacentre.org
- ahacentre
- @ahacentre
- @ahacentre

The AHA Centre, GRAHA BNPB 13th floor,  
Jl. Raya Pramuka Kav. 38, East Jakarta 13120 Indonesia

#### SOURCES

ASEAN Disaster Monitoring & Response System (DMRS);  
ASEAN Specialised Meteorological Centre (ASMC); Joint  
Typhoon Warning Centre (JTWC);

Indonesia: BNPB, BMKG, PVMBG;  
Myanmar: DDM, DMH;  
Philippines: PHIVOLCS;  
Thailand: DDPM, TMD;  
Viet Nam: VDDMA.

Various news agencies.

#### DISCLAIMER

The AHA Centre was established in November 2011 by the  
Association of Southeast Asian Nations (ASEAN) Member  
States to facilitate cooperation and coordination among  
Member States, relevant agencies of the United Nations and  
international organisations in disaster management and  
emergency response.

This update consists of significant natural disaster events  
that occurred in ASEAN Member States – Brunei  
Darussalam, Cambodia, Indonesia, Lao PDR, Malaysia,  
Myanmar, Philippines, Singapore, Thailand, and Viet Nam.  
The disasters recorded include Drought, Flood, Earthquake,  
Tsunami, Volcano, Wind, Landslide, and Storm.

The use of boundaries, geographic names, related  
information, and potential considerations for response are  
for references, not warranted to be error-free or implying  
official endorsement from ASEAN Member States.

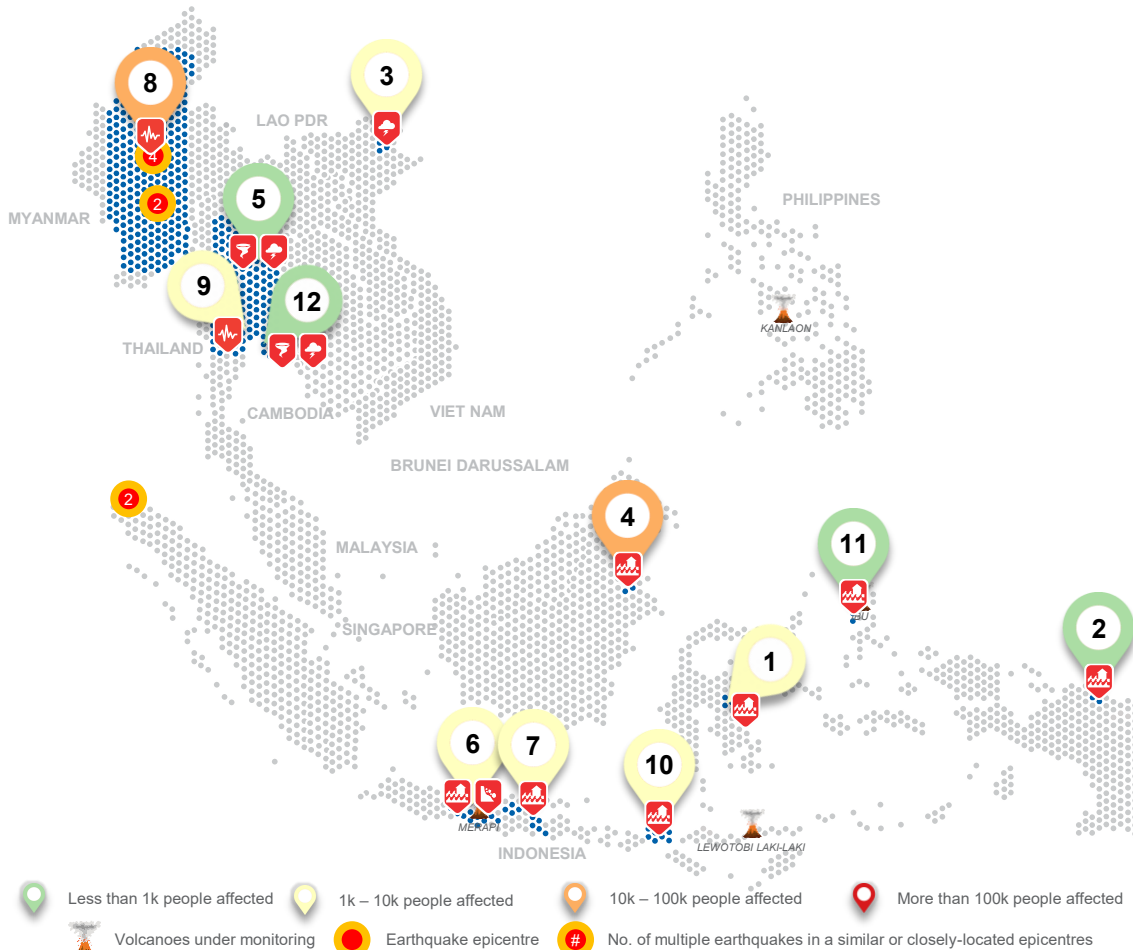
© 2025 AHA Centre.  
All rights reserved.

For inquiries, comments, and/or suggestions,  
you may reach us through [dma@ahacentre.org](mailto:dma@ahacentre.org)



You are receiving this email because you are  
registered in our distribution list.

SCAN TO SUBSCRIBE



## REGIONAL TALLY



Note: Estimations are based on data reported/confirmed by National  
Disaster Management Organisations of each respective ASEAN  
Member State and other verified sources

- 01 Indonesia, Flooding in [Morowali Utara](#) (Central Sulawesi)**  
24 Mar 2025
- 02 Indonesia, Flooding in [Sarmi](#) (Papua)**  
24 Mar 2025
- 03 Viet Nam, Storms in [Thuan Chau and Quynh Nhai](#) (Son La)**  
25 Mar 2025
- 04 Indonesia, Flooding in [Berau](#) (East Kalimantan)**  
25 Mar 2025
- 05 Thailand, Storms in [Lom Kao](#) (Phetchabun)**  
26 Mar 2025
- 06 Indonesia, Flooding and Landslides in [Kebumen \(2\)](#), [Purworejo](#),  
and [Klaten](#) (Central Java), [Bantul \(2\)](#), [Gunung Kidul](#), and [Kulon  
Progo](#) (Yogyakarta)**  
27, 28, 28, 28, 28, 28, 28, 28 Mar 2025
- 07 Indonesia, Flooding in [Lumajang](#), [Ngawi](#), [Pasuruan](#), and  
[Pasuruan City](#) (East Java)**  
27, 28, 28, 28 Mar 2025
- 08 Myanmar, [M7.7 Mandalay Earthquake](#)**  
28 Mar 2025
- 09 Thailand, Impact of M7.7 Mandalay Earthquake in [Bangkok and  
18 Provinces](#)**  
28 Mar 2025
- 10 Indonesia, Flooding in [Bima](#) (West Nusa Tenggara)**  
29 Mar 2025
- 11 Indonesia, Flooding in [Ternate City](#) (North Maluku)**  
30 Mar 2025
- 12 Thailand, Storms in [Kaeng Hang Mao and Soldao](#) (Chanthaburi)**  
30 Mar 2025

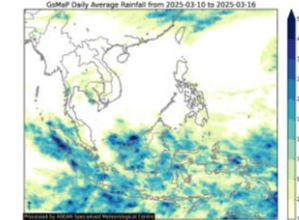
## REGIONAL SUMMARY:

In the thirteenth week of 2025, the ASEAN region experienced a total of 24 disaster, including earthquakes, floods, landslides, storms, and wind-related disasters. These events affected several countries in the region, namely Indonesia, Myanmar, Thailand, and Viet Nam. According to Indonesia's National Disaster Management Authority ([BNPB](#)), incidents were reported across Central Java, East Java, East Kalimantan, North Maluku, West Nusa Tenggara, Papua, Central Sulawesi, and Yogyakarta. In Myanmar, the Department of Disaster Management ([DDM](#)) reported that a magnitude 7.7 Mandalay Earthquake had a catastrophic impact on the country. The effects of this earthquake were also experienced in Thailand, as noted by the Department of Disaster Prevention and Mitigation ([DDPM](#)). Additionally, [DDPM](#) reported storms and wind-related events in Phetchabun and Chanthaburi provinces. In Viet Nam, the Viet Nam Disaster and Dyke Management Authority ([VDDMA](#)) also reported storm in Son La province.

## HIGHLIGHT:

At 13:20 hrs (UTC+7) on 28 March 2025, a powerful earthquake with a magnitude of 7.7 and a depth of 10 km struck approximately 19 km northwest of Mandalay, Myanmar. This was followed by a significant aftershock at 13:32 hrs (UTC+7), with a magnitude of 6.4 at the same depth, further intensifying the situation. In Myanmar, preliminary reports indicate severe impacts, including the tragic loss of life and considerable damage to infrastructure and property. A state of emergency has been declared in six of the most severely affected areas: Mandalay, Sagaing, Magway, Shan State, Naypyidaw, and Bago ([DDM](#)). In Thailand, [DDPM](#) has also reported significant impacts, with the earthquake posing significant risks to life, safety, and infrastructure. On the evening of 29 March, the AHA Centre's In-Country Liaison Team (ICLT), arrived in Nay Pyi Taw to work closely with DDM Myanmar in coordinating regional disaster response efforts. The AHA Centre has engaged Singapore, Malaysia, and Indonesia to support urban search and rescue (USAR) operations in Myanmar. Additionally, Lao PDR, Thailand, Viet Nam, and the Philippines have expressed readiness to deploy USAR teams, emergency medical teams (EMT), and relief resources. Further details are available in the AHA Centre's Situation Updates [#1 \(29 March\)](#) and [#2 \(31 March\)](#) on the M7.7 Mandalay Earthquake.

## HYDRO-METEO-CLIMATOLOGICAL:



For the past week, data from the ASEAN Specialised Meteorological Centre ([ASMC](#)) indicated medium to high 7-day average rainfall across the Maritime Continent, which includes Brunei Darussalam, Indonesia, and Malaysia. As of this reporting, there is no significant active tropical cyclone being monitored in the ASEAN region ([JTWC](#)).

## GEOPHYSICAL:

Eight (8) significant earthquakes (M<sub>2</sub>≥5.0) were recorded by Indonesia's *Badan Meteorologi, Klimatologi, dan Geofisika* ([BMKG](#)), the Philippine Institute of Volcanology and Seismology ([PHIVOLCS](#)), Myanmar's Department of Meteorology and Hydrology ([DMH](#)), and Thai Meteorological Department ([TMD](#)). Mount Ibu (alert level III), Dukono (alert level II), Lewotobi Laki-laki (alert level II), Ili Lewotolok (alert level II), Raung (alert level II), Semeru (alert level II), and Marapi (alert level II) in Indonesia, and Kanlaon (alert level 3), Taal (alert level 1), and Mayon (alert level 1) volcanoes in the Philippines reported recent volcanic activity according to *Pusat Vulkanologi dan Mitigasi Bencana Geologi* ([PVMBG](#)) and [PHIVOLCS](#).

## OUTLOOK:

According to the ASEAN Specialised Meteorological Centre ([ASMC](#)), for the coming week, wetter conditions are predicted over the northeastern Maritime Continent; and warmer conditions are predicted over parts of the eastern equatorial region. For the regional assessment of extreme weather events, there is a low chance of very heavy rainfall to occur in ASEAN Region. Furthermore, there is a moderate increase in chance of extreme heat conditions to occur over southern Myanmar and small increase in chance to occur over western and southern Borneo, Sulawesi, Maluku Islands, and Papua. La Niña conditions are now present. La Niña conditions tend to bring wetter than average conditions to much of the ASEAN region during the intermonsoon period.