



ONE ASEAN
ONE RESPONSE

WEEKLY DISASTER UPDATE

Week 12

16 – 22 March 2026

- ahacentre.org
- ahacentre
- @ahacentre
- @ahacentre

The AHA Centre, GRAHA BNPB 13th floor,
Jl. Raya Pramuka Kav. 38, East Jakarta 13120 Indonesia

SOURCES

ASEAN Disaster Monitoring & Response System (DMRS); ASEAN Disaster Information Network (ADINet); ASEAN Specialised Meteorological Centre (ASMC); ASEAN Earthquake Information Centre (AEIC); Joint Typhoon Warning Centre (JTWC);

Indonesia: BNPB, BMKG, PVMBG;
Philippines: PHIVOLCS;
Thailand: DDPM;
Viet Nam: VDDMA;
Various news agencies.

DISCLAIMER

The AHA Centre was established in November 2011 by the Association of Southeast Asian Nations (ASEAN) Member States to facilitate cooperation and coordination among Member States, relevant agencies of the United Nations and international organisations in disaster management and emergency response.

This update consists of significant disaster cause by natural hazards events that occurred in ASEAN Member States – Brunei Darussalam, Cambodia, Indonesia, Lao PDR, Malaysia, Myanmar, Philippines, Singapore, Thailand, Timor-Leste, and Viet Nam. The disasters recorded include Drought, Flood, Earthquake, Tsunami, Volcano, Wind, Landslide, and Storm.

The use of boundaries, geographic names, related information, and potential considerations for response are for reference, not warranted to be error-free or implying official endorsement from ASEAN Member States.

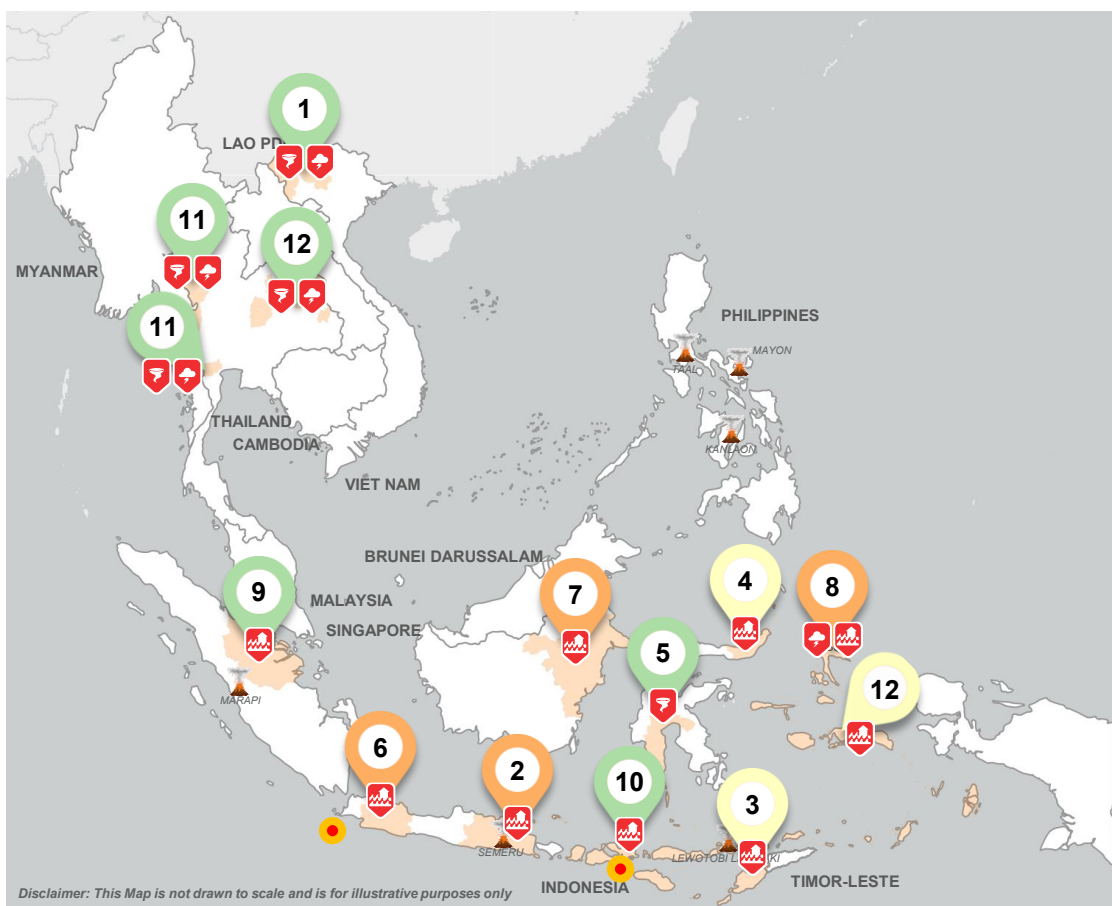
© 2026 AHA Centre.
All rights reserved.

For inquiries, comments, and/or suggestions,
you may reach us through dma@ahacentre.org

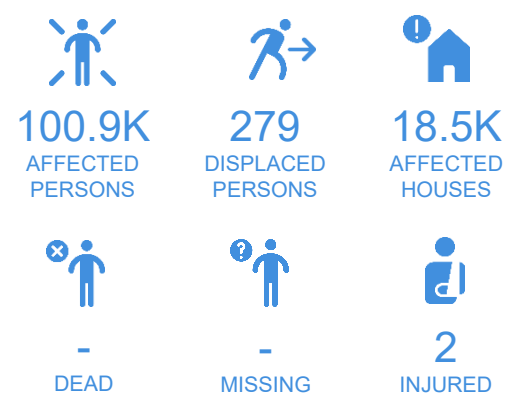


You are receiving this email because you are registered in our distribution list.

SCAN TO SUBSCRIBE



REGIONAL TALLY



Note: Estimations are based on data reported/confirmed by National Disaster Management Organisations of each respective ASEAN Member State and other verified sources

- 01 Viet Nam, Storms and Strong Winds in [Lai Chau](#), [Lao Cai](#), and [Dien Bien](#)**
16, 21 Mar 2026
- 02 Indonesia, Flooding in [Nganjuk](#), [Pasuruan](#), [Mojokerto](#), and [Magetan](#) (East Java)**
16, 19, 20, 20 Mar 2026
- 03 Indonesia, Flooding in [North Central Timor](#) and [Sikka](#) (East Nusa Tenggara)**
17, 20 Mar 2026
- 04 Indonesia, Flooding in [Minahasa](#) (North Sulawesi)**
18 Mar 2026
- 05 Indonesia, Strong Winds in [Bone](#) (South Sulawesi)**
18 Mar 2026
- 06 Indonesia, Flooding in [Majalengka](#) and [Depok](#) (West Java)**
18, 21 Mar 2026
- 07 Indonesia, Floods in [Malinau](#) (North Kalimantan)**
18 Mar 2026
- 08 Indonesia, Storms and Flooding in [East Halmahera](#) (North Maluku)**
19 Mar 2026
- 09 Indonesia, Flooding in [Kuantan Singingi](#) (Riau)**
19 Mar 2026
- 10 Indonesia, Flooding in [Bima](#) (West Nusa Tenggara)**
20 Mar 2026
- 11 Thailand, Storms and Strong Winds in [Ratchaburi](#), [Nong Bua Lamphu](#), [Kalasin](#), and [Tak](#)**
20 Mar 2026
- 12 Others: Indonesia – [Maluku](#) (21 Mar); Thailand – [Nakhon Phanom](#), [Amnat Charoen](#), and [Chaiyaphum](#) (20, 22 Mar)**

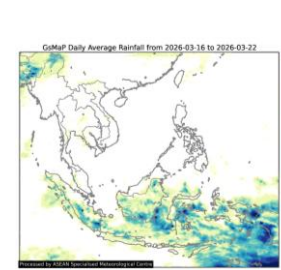
REGIONAL SUMMARY:

During the twelfth week of 2026, a total of 27 disaster events were reported across the ASEAN region, including floods, storms, and wind-related disasters in Indonesia, Thailand, and Viet Nam. In Indonesia, [Badan Nasional Penanggulangan Bencana \(BNPB\)](#) reported incidents across East Java, East Nusa Tenggara, North Sulawesi, West Java, North Kalimantan, North Maluku, Riau, West Nusa Tenggara, and Maluku. In Thailand, the Department of Disaster Prevention and Mitigation ([DDPM](#)) reported storms and strong winds in Ratchaburi, Nong Bua Lamphu, Kalasin, Tak, Nakhon Phanom, Amnat Charoen, and Chaiyaphum. Likewise, in Viet Nam, the Viet Nam Disaster and Dyke Management Authority ([VDDMA](#)) also reported storms and wind-related disasters that affected Lai Chau, Lao Cai, and Dien Bien.

HIGHLIGHT:

In Indonesia, persistent heavy rainfall caused major rivers to overflow and triggered flooding in Malinau Regency. According to [BNPB](#), floods combined with debris affected approximately 5K families (about 43K people) across 13 villages in five sub-districts. The floods impacted around 5K houses, at least 23 education facilities, and government offices, disrupting local services and livelihoods. Authorities conducted rapid assessments, coordinated response efforts, and provided immediate assistance to affected communities. According to the latest update from [BNPB](#), floodwaters have receded and residents have since returned to their normal activities.

HYDRO-METEO-CLIMATOLOGICAL:



For the past week, data from the ASEAN Specialised Meteorological Centre ([ASMC](#)) indicated medium to high 7-day average rainfall across Indonesia, Myanmar (northern and eastern areas), and Timor-Leste. The high rainfall accumulation in eastern portions of Indonesia reflected the development of Tropical Cyclone NARELLE. As of this report, the remnant low-pressure system of TC NARELLE is being monitored over northwestern Australia. It is forecast to move southwestward, with a high likelihood of re-developing into a tropical cyclone over the Indian Ocean ([BMKG](#)).

GEOPHYSICAL:

Two (2) significant earthquakes ($M \geq 5.0$) were recorded by Indonesia's [Badan Meteorologi, Klimatologi, dan Geofisika \(BMKG\)](#). Mount Semeru (alert level III), Lewotobi Laki-laki (alert level II), and Marapi (alert level II) in Indonesia, and Taal (alert level 1), Bulusan (alert level 1) Mayon (alert level 3), and Kanlaon (alert level 2) volcanoes in the Philippines reported recent volcanic activity according to [Pusat Vulkanologi dan Mitigasi Bencana Geologi \(PVMBG\)](#) and the Philippines Institute of Volcanology and Seismology ([PHIVOLCS](#)).

OUTLOOK:

According to the ASEAN Specialised Meteorological Centre ([ASMC](#)), for the coming week, drier-than-usual conditions are expected across southeastern Mainland Southeast Asia and the northeastern Maritime Continent, with drier conditions also persisting over parts of the western and central equatorial region. Warmer than usual temperatures are forecast over parts of the western Maritime Continent. The likelihood of very heavy rainfall across the region remains low, and there is a slight increase in chance of extreme heat over parts of the Malay Peninsula, central Sumatra, western Kalimantan, and the northern tip of Myanmar. Meanwhile, La Niña conditions are expected to continue to weaken and are expected to transition to ENSO-neutral conditions in March 2026. The Indian Ocean Dipole (IOD) has remained above the positive threshold since February 2026.